

LET YOUR DEVICES TALK



CONGRATULATIONS!

You're now the proud owner of a ROCCAT™ Ryos MK FX – Mechanical Gaming Keyboard With Per-key RGB Illumination, the most advanced, most customizable mechanical keyboard ever – NOBODY comes close! With an eye-watering number of configuration options, fully-configurable per-key RGB illumination and high-quality CHERRY® MX key switches, you can break out – and unleash the gaming beast within.

Easy-Shift[+]™

Easy-Shift[+]™ doubles the number of keys you have at your disposal – meaning you won't have to hunt for keys in the heat of the battle. It's as easy as holding down the Easy-Shift[+]™ key and hitting the key of your choice to activate its secondary function.

Macro Live! recording

Macro Live! technology makes in-game macro recording a joy. Just hold down the function key, hit the record button, and let the sound feedback tool talk you through the quick and easy recording process, step by step – it's that simple.

CHERRY® MX key switches

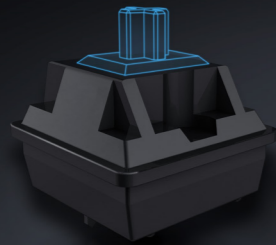
Locked and loaded with best-in-the-industry CHERRY® MX mechanical key switches. With an eye-watering 50 million key stroke durability, you can count on these switches during intense gaming sessions.



QUICK-INSTALLATION GUIDE

IMPORTANT DOCUMENT

INDUSTRY-LEADING CHERRY® MX KEY SWITCHES



SPECIFICATIONS

PACKAGE CONTAINS

- ROCCAT™ Ryos MK FX – Mechanical Gaming Keyboard With Per-key RGB Illumination
- Quick-Installation Guide

SYSTEM REQUIREMENTS

- Windows® 7 32/64 bit, Windows® 8/8.1 Pro, Windows® 10
- 2 USB 2.0 ports
- 1 line-out jack, 1 mic-in jack
- Internet connection (for driver installation)

TECH SPECS

- RGB Per-key illuminated mechanical keyboard
- N-key rollover (NKRO)
- CHERRY® MX key switches
- 3 programmable thumbster keys (T1 – T3)
- 5 programmable macro keys (M1 – M5)
- All other standard keys fully re-mappable
- 1000Hz polling rate, 1ms response time
- 1.8m rear-exit braided cable
- 1 x mic in, 1 x audio out
- 2 x 32-bit ARM Cortex processors + 2MB flash memory
- 23.4cm x 50.8cm size
- 1.6kg weight

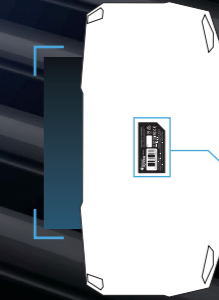


Swarm is the software incarnation of ROCCAT's future ready philosophy. It'll cover you for all relevant gaming platforms and devices. It's the next-gen system that keeps on top all games, apps and ROCCAT products in one place.



© 2015 ROCCAT GmbH. All rights reserved. Any product names mentioned in this manual may be trademarks or registered trademarks and are the property of their respective owners. Information contained herein is subject to change without notice. ROCCAT GmbH shall not be made liable for any errors that may appear in this manual. This publication or parts of it may not be reproduced without the express consent of the publisher.

ROCCAT GmbH
Otto von Bahrenpark, Paul-Dessau-Str. 3G, 22761 Hamburg, Germany



PLEASE USE YOUR PRODUCT'S SERIAL NUMBER (LOCATED ON THE BOTTOM LABEL) FOR REGISTRATION. SIGN IN AT: WWW.ROCCAT.ORG

WWW.ROCCAT.ORG/SUPPORT

Our support team is ready to help with any technical questions. Just send an e-mail to support@roccat.org. Or visit our website at:

Should you need assistance ...



ROCCAT™ EASY-SHIFT[+]™

DUPLICATE YOUR KEYS WITH EASY-SHIFT[+]™

The innovative ROCCAT™ driver software allows you to quickly and easily re-map the primary key functions of virtually every key on the keyboard. Enabled by the Easy-Shift[+]™ key, you can also assign a secondary key function to those keys – effectively doubling the number of keys you have at your disposal. Factor in the fact that you can record and store on board over 500 macros, and you've got an insanely customizable keyboard on your hands.

MASTERFUL MACRO CONTROLS

New enhanced Macro Live! technology makes in-game macro recording a joy. Simply hold down the function key, hit the Macro Live! recording button, and let the handy sound feedback tool talk you through the quick and easy recording process, step by step. Thanks to the powerful 2 MB of flash memory, all of your macros are saved onto the keyboard itself, not the driver – giving you the freedom to lay down any orders without delay. And you won't have to leave your game to do it.



Double up your keys: program a secondary key function in the ROCCAT™ driver and then enable it by holding down the strategically-placed Easy-Shift[+]™ key.

EASY-SHIFT[+]™ EXAMPLES:

[+] = Easy-Shift[+]™ key

Easy-Shift[+]™ WoW:	
[+] + 1 = Mount up	[+] + A = Use hearthstone
[+] + 2 = Dismount	[+] + S = Autorun
[+] + 3 = Pet attack	[+] + D = Hotbar slot #1
[+] + 4 = Pet passive	[+] + F = Hotbar slot #2
[+] + 5 = Pet follow	[+] + G = Start timer
[+] + Q = Yell chat	[+] + Z = Your macro #1
[+] + W = World map	[+] + X = Your macro #2
[+] + E = Trade chat	[+] + C = Your macro #3
[+] + R = Raid chat	[+] + V = Your macro #4
[+] + T = Party chat	[+] + B = Your macro #5

Easy-Shift[+]™ Multimedia:	Easy-Shift[+]™ Browser:
[+] + M1 = Play or pause	[+] + M1 = New tab
[+] + M2 = Stop playback	[+] + M2 = New window
[+] + M3 = Play the previous item	[+] + M3 = Switch to previous tab
[+] + M4 = Play the next item	[+] + M4 = Switch to next tab
[+] + M5 = Rewind	[+] + M5 = Switch to full screen & back
[+] + T1 = Volume up	[+] + T1 = Page back
[+] + T2 = Volume down	[+] + T2 = Page forward
[+] + T3 = Mute volume	[+] + T3 = Minimize window

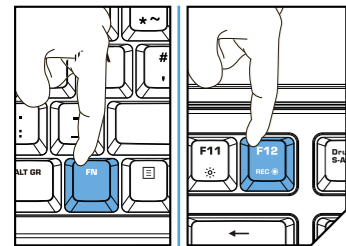
ADD COLOR TO YOUR ARSENAL FOR ENDLESS CONFIGURATION OPTIONS

The Ryos MK FX offers totally customizable, ROCCAT™-engineered per-key RGB illumination in two convenient modes: smart and manual. This means you can add awesome special effects in 16.8M colors to your keystrokes, configure your keyboard to highlight your in-game and application key bindings, your modifier keys, your macro sequences and cool downs, your system controls, and much, much more. The included software development kit ensures that only your imagination is the limit.

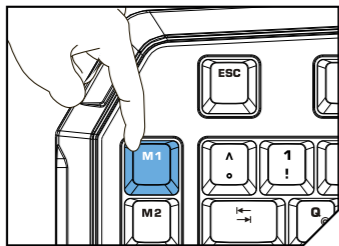


HOW TO USE MACRO LIVE! RECORDING

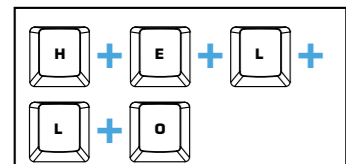
1 START LIVE! RECORDING HOLD DOWN "FN" KEY AND PRESS "F 12"



2 ASSIGN A MACRO KEY EXAMPLE: M1

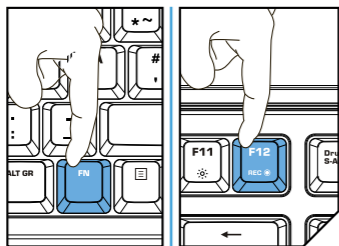


3 TYPE YOUR OWN MACRO EXAMPLE: "HELLO"



PLEASE NOTE:
DELAYS WILL ALSO BE RECORDED.

4 STOP LIVE! RECORDING HOLD DOWN "FN" KEY AND PRESS "F 12"



DE

ANLEITUNG

- Für einen ergonomischeren Stand klappe die Füße an der Unterseite der Tastatur aus.
- Schließe die beiden ROCCAT™ Ryos MK FX USB Stecker an zwei freie USB Ports an.
- Stecke die ROCCAT™ Ryos MK FX Audio In/Out Stecker in die entsprechenden Buchsen an deinem Computer.
- Starte den Computer und stelle eine Internetverbindung her.
- Rufe www.roccat.org/roccat-swarm auf und lade dir die neueste Swarm Version herunter.
- Starte die Software Installation und folge den Anweisungen.

DK

INSTRUKTIONER

- Klap støtterne ud på tastaturets bund for forbedret ergonomisk position.
- Sæt ROCCAT™ Ryos MK FX's to USB-forbindere i en af de to ledige USB-porte.
- Sæt ROCCAT™ Ryos MK FX's audio in/out-kabler i de tilhørende porte på computeren.
- Start computeren op, og slut den til internettet.
- Navigér til www.roccat.org/roccat-swarm, og download den nyeste version af Swarm.
- Start software-installationen, og følg anvisningerne på skærmen.

EN

INSTRUCTIONS

- For a more ergonomic position, fold out the stands on the base of the keyboard.
- Plug the ROCCAT™ Ryos MK FX's two USB connectors into any two free USB ports.
- Plug the ROCCAT™ Ryos MK FX's audio in/out cables into the corresponding ports on your computer.
- Boot your computer and connect to the internet.
- Navigate to www.roccat.org/roccat-swarm and download the latest version of Swarm.
- Start the software installation process and follow the on-screen instructions.

ES

INSTRUCCIONES

- Para una posición más ergonómica, despliega las patas en la base del teclado.
- Conecta los dos conectores USB de ROCCAT™ Ryos MK FX a cualquiera de los dos puertos USB libres.
- Conecta los cables de entrada/salida de audio de ROCCAT™ Ryos MK FX a los puertos correspondientes de tu ordenador.
- Enciende tu ordenador y conéctate a internet.
- Accede a la página www.roccat.org/roccat-swarm y descárguese la última versión swarm.
- Inicie el proceso de instalación de software y siga las instrucciones de la pantalla.

FI

OHJEET

- Ergonomisemman asennon saat aikaiseksi kääntämällä esiin näppäimistön pohjassa olevat tuet.
- Liitä ROCCAT™ Ryos MK FX:n kaksi USB-liitintä vapaisiin USB-portteihin.
- Liitä ROCCAT™ Ryos MK FX:n audio in/out -johdot tietokoneesi vastaaviin portteihin.
- Aja tietokoneesi ylös ja avaa Internet.
- Siirry osoitteeseen www.roccat.org/roccat-swarm ja lataa Swarm-ohjelmiston uusin versio.
- Käynnistä ohjelmiston asennusprosessi ja seuraa näyttöruudulla näkyviä ohjeita.

FR

INSTRUCTIONS

- Pour une position plus ergonomique, activez les cales en dessous du clavier.
- Branchez les 2 ports USB du ROCCAT™ Ryos MK FX à 2 ports USB du PC.
- Branchez les connecteurs audio du ROCCAT™ Ryos MK FX aux connecteurs correspondants sur votre PC.
- Allumez votre PC et connectez-vous à Internet.
- Allez sur www.roccat.org/roccat-swarm et téléchargez la dernière version de Swarm.
- Débutez l'installation du programme et suivez les indications.

PL

INSTRUKCJA

- Dla bardziej ergonomicznej pozycji, odchyl podpórki po spodniej stronie klawiatury.
- Podłącz dwa złącza USB ROCCAT™ Ryos MK FX do dwóch wolnych gniazd USB.
- Podłącz kable audio we/wy ROCCAT™ Ryos MK FX do odpowiednich gniazd komputera.
- Włącz komputer i połącz się z Internetem.
- Przejdź do strony www.roccat.org/roccat-swarm i pobierz najnowszą wersję Swarm.
- Rozpocznij instalację oprogramowania i postępuj zgodnie z instrukcjami na ekranie.

PT

INSTRUÇÕES

- Para uma posição mais ergonómica, desdobre os suportes da base do teclado.
- Ligue os dois conetores USB do ROCCAT™ Ryos MK FX em quaisquer umas das duas portas USB livres.
- Ligue os cabos de entrada/saída de áudio do ROCCAT™ Ryos MK FX às portas correspondentes no seu computador.
- Ligar o computador e estabelecer ligação à internet.
- Navegar para www.roccat.org/roccat-swarm e descarregar a versão mais recente do Swarm.
- Iniciar o processo de instalação do software e seguir as instruções indicadas no ecrã.

RU

ИНСТРУКЦИИ

- Для более эргономичного положения выдвиньте ножки на задней стороне клавиатуры.
- Вставьте два USB-коннектора ROCCAT™ Ryos MK FX в два любых свободных USB-порта.
- Вставьте кабели audio in/out ROCCAT™ Ryos MK FX в соответствующие гнезда компьютера.
- Включите компьютер и подсоединитесь к Интернету.
- Зайдите на www.roccat.org/roccat-swarm и загрузите самую новую версию Swarm.
- Начните процесс установки программного обеспечения и следуйте указаниям на экране.

SE

INSTRUKTIONER

- Fäll ut stativet på tangentbordets underdel för att få en mer ergonomisk position.
- Koppla ROCCAT™ Ryos MK FXs två USB-kontakter till två lediga USB-portar.
- Koppla ROCCAT™ Ryos MK FXs audio in/out-kablar till motsvarande portar på din dator.
- Boota datorn och koppla upp dig på Internet.
- Gå till www.roccat.org/roccat-swarm och ladda ned den senaste versionen av Swarm.
- Starta programvaruinstallationen och följ anvisningarna på bildskärmen.