

DESIGNED FOR:

PC / LAPTOP

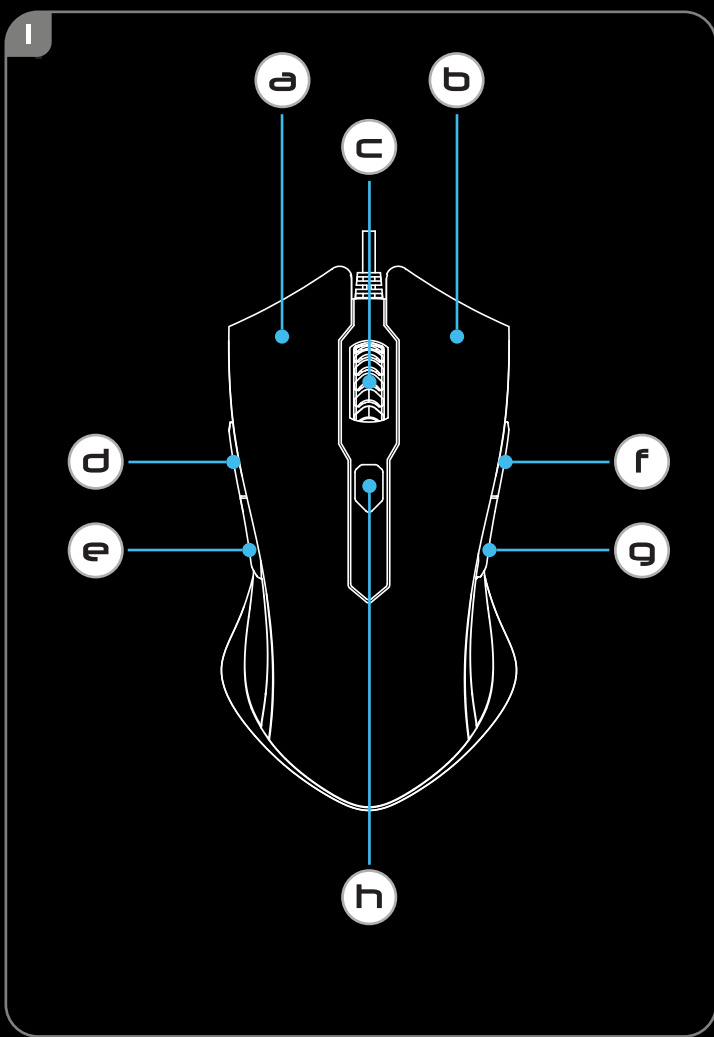
GAMING GXT 177 MOUSE



Frequently asked questions:
www.trust.com/21294/FAQ

 **Trust**





The screenshot shows a web browser window with the Trust website's support page. The page has a navigation bar with 'Trust.com - 21294', 'PRODUCTS', 'CONTACT & SUPPORT', and a search icon. The main content area is titled 'SUPPORT' and includes a 'DOWNLOAD' section with three columns: 'MANUALS', 'PRODUCT INFORMATION', and 'SOFTWARE'. The 'SOFTWARE' column lists operating systems (Windows 10, 8, 7, XP) and a 'DOWNLOAD EXE (8,26 MB)' button. A blue box highlights this button, with a callout 'b' pointing to it. Below the browser, a Windows User Account Control dialog box is open, asking for permission to allow 'Trust GXT 177 Game' to make changes. The dialog shows the program name, publisher 'Trust International', and file origin 'Network drive'. A blue box highlights the 'Yes' button, with a callout 'c' pointing to it. Below the dialog, the Trust GXT 177 logo is shown with a callout 'd' pointing to it, and a pill icon with '2x' next to it. At the bottom, a dark window shows the 'APPLY' button highlighted with a blue box and callout 'e'.

CXT TRUST GAMING PROFILE 1 PROFILE 2 PROFILE 3 PROFILE 4 PROFILE 5 **CXT I77** [-] X

LEFT CLICK **RIGHT CLICK**
MIDDLE CLICK
DPI + **FORWARD**
DPI - **BACKWARD**
DPI SWITCH CYCLE

PERFORMANCE **BUTTON** **EFFECT**

MOUSE EVENT >>
 KEYBOARD EVENT >>
 MEDIA >>
 DPI SWITCH >>
 REPORT RATE >>
 PROFILE SWITCH >>
 MACRO >>

LEFT CLICK
 RIGHT CLICK
 MIDDLE CLICK
 BACKWARD
 FORWARD
 DISABLE

SAVE AS LOAD FILE RESTORE RESET ALL APPLY

v1.0.0.1 English ▲

PROFILE 5 **CXT**

EFFECT **PERFORMANCE**

DPI

X 600
 Y 600

REPORT RATE

125 250 333

SCROLL SPEED

333 500 1000

max off max

DPI SETTINGS

PERFORMANCE **BUTTON**

MOUSE EVENT

KEYBOARD EVENT >>
 MEDIA >>
 DPI SWITCH >>
 REPORT RATE >>
 PROFILE SWITCH >>
 MACRO >>

LEFT CLICK
 RIGHT CLICK
 MIDDLE CLICK
 BACKWARD
 FORWARD
 DISABLE

1x

RIGHT CLICK
MIDDLE CLICK
FORWARD
BACKWARD
DPI SWITCH CYCLE
 DISABLE

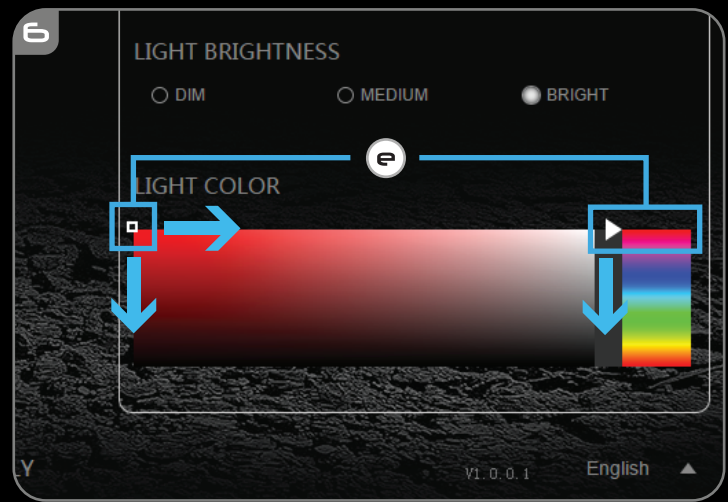
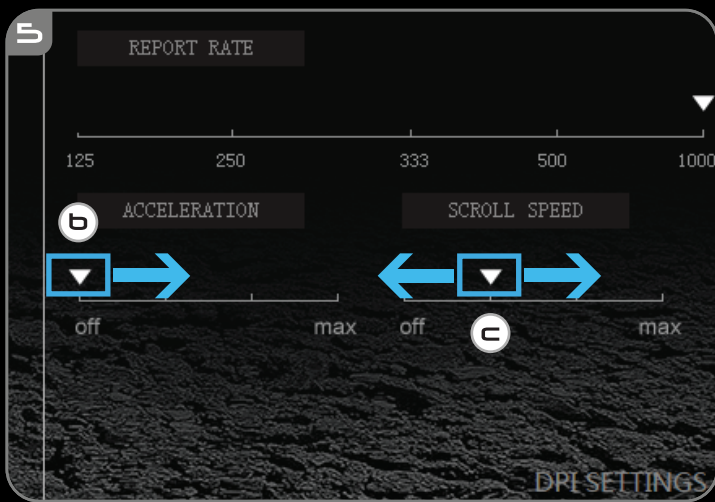
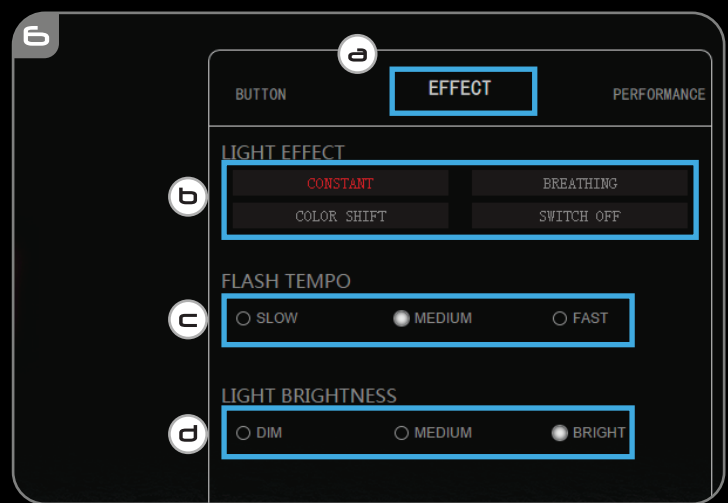
1x

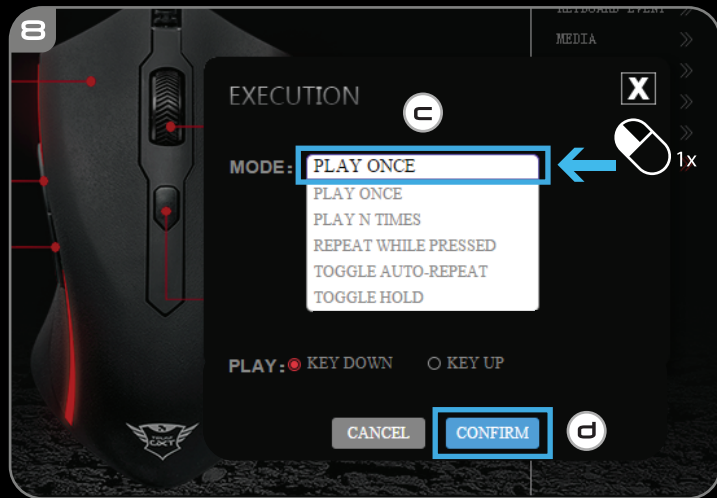
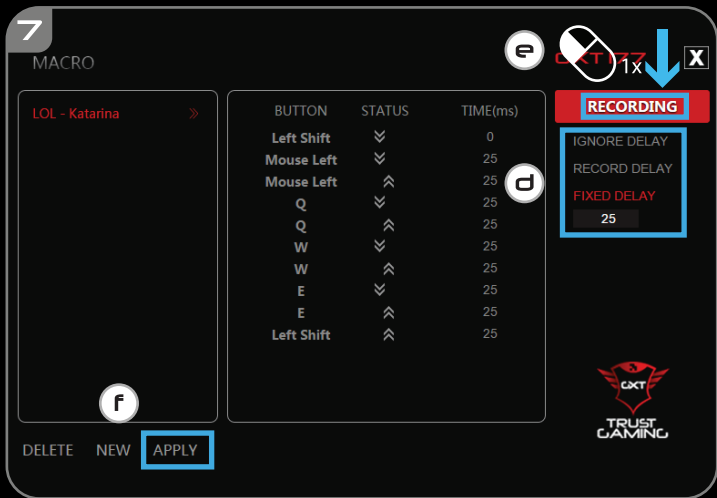
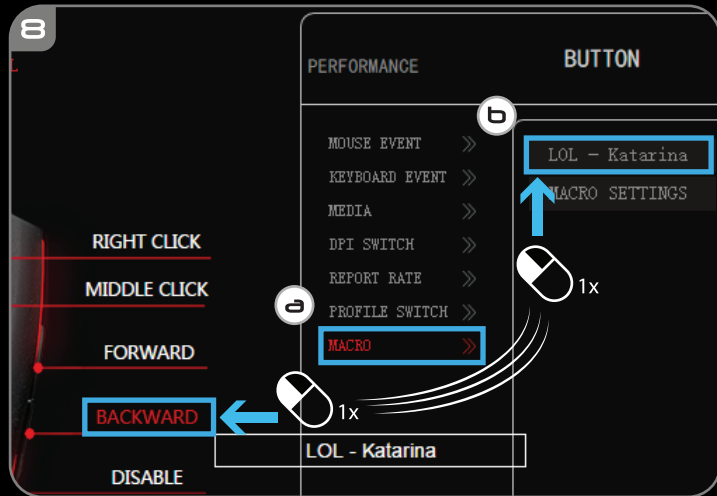
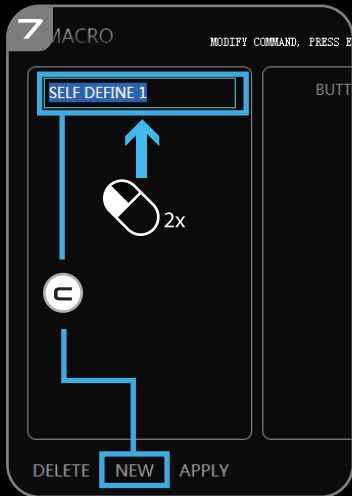
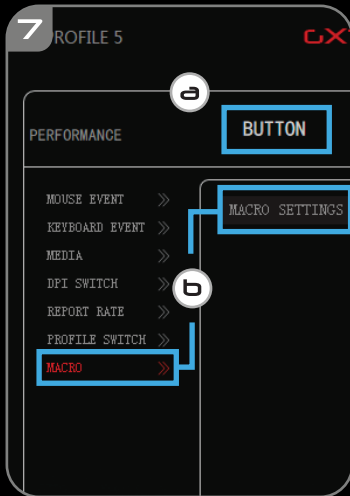
SETTINGS **CXT I77**

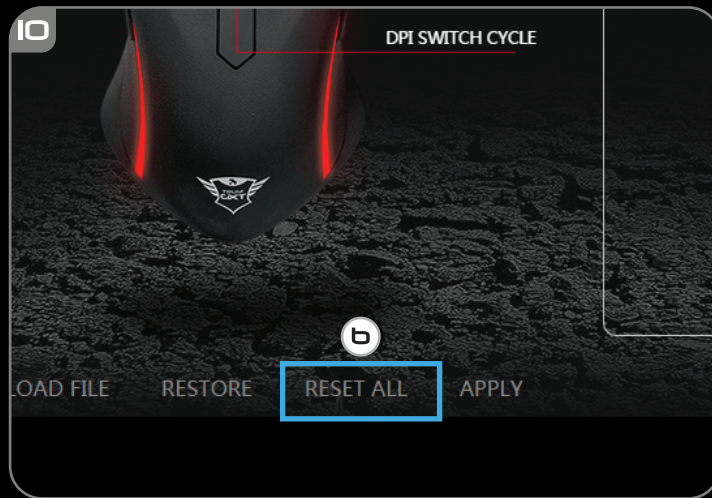
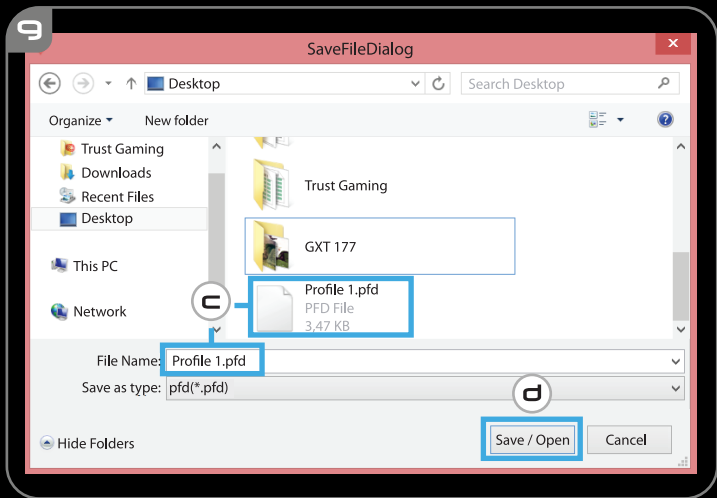
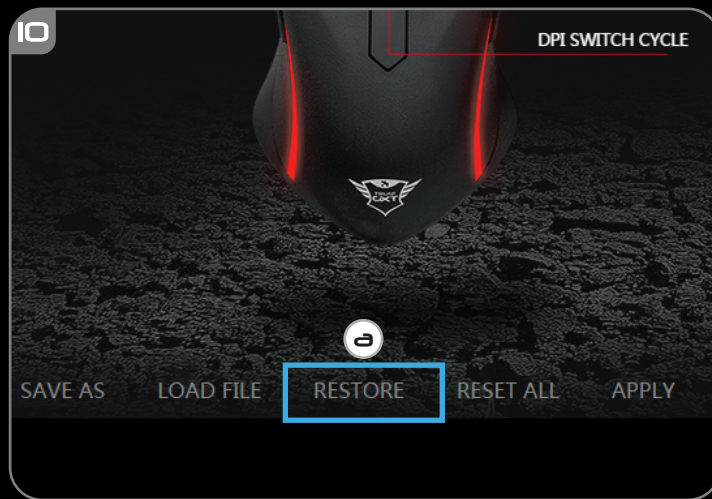
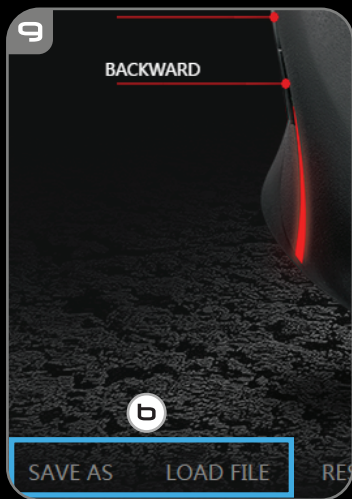
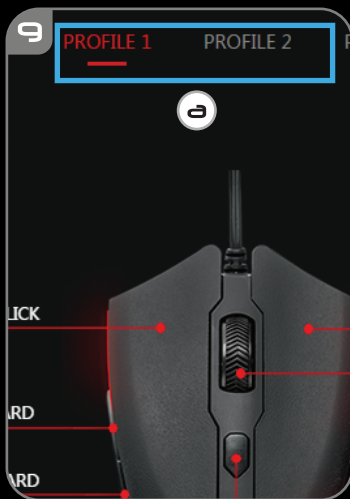
1 **2** **3** **4** **5**

X Y X Y X Y X Y X Y

d







1. Button layout

a	- Button 1 (Default = Left mouse button)
b	- Button 2 (Default = Right mouse button)
c	- Button 3 (Default = Mid click)
d	- Button 4 (Default = Forward)
e	- Button 5 (Default = Backward)
f	- Button 6 (Default = Forward)
g	- Button 7 (Default = Backward)
h	- Button 8 (Default = DPI Cycle)

2. Installation

- a - Open the internet browser and go to www.trust.com/21294/driver.
- b - Click the "Download EXE" button to download the software.
- c - Click on the "Setup-GXT 177.exe" and follow the installation wizard.
- d - Click on the "Trust GXT 177.exe" shortcut to start the software.
- e - You can now start to configure the mouse. In the manual will be referred to 'Apply' to update the mouse.

Button Programming

3. Assign a function

- a - Click on the 'Button' tab.
- b - Click on the function you want to assign.
- c - Click on the button you want to re-assign.
 - Click on 'Apply' → The mouse is being updated.

- At least one button must be assigned as "Left Click".
-

Report rate & DPI settings

4. DPI setting

- a** - Click on the 'PERFORMANCE' tab.
- b** - Change the DPI settings by clicking the respective bar.
- c** - Click 'DPI SETTINGS' to enter advanced DPI settings.
- d** - Click the switch under the DPI number to enable or disable this setting.
 - Click on 'Apply' → The mouse is being updated.

5. Other Settings

- a** - Change the Report Rate by dragging the respective cursor.
 - b** - Change the Acceleration by dragging the respective cursor.
 - c** - Change the scroll speed by dragging the respective cursor.
 - Click on 'Apply' → The mouse is being updated.
-

Light Settings

6. Change the Light Effect

- a** - Click on the 'EFFECT' tab.
 - b** - Change the light mode.
 - c** - Change the breathing speed.
 - d** - Change the brightness level.
 - e** - Select the desired LED color or pick a custom color by dragging the respective cursor.
 - Click on 'Apply' → The mouse is being updated.
-

Macro Settings

7. Create a Macro *(Store a sequence of keys in the software)*

- a** - Go to the 'Buttons' tab.
 - b** - Click on 'MACRO' and then on 'MACRO SETTINGS'.
 - c** - Click on 'NEW' and double click on 'SELF DEFINE X' to rename the macro.
 - d** - Set the delay time between each action.
 - e** - Click 'Recording' to start recording the macro. Now enter your preferred macro sequence. Click 'Recording' again to stop recording the macro.
 - f** - Click on 'Apply' to save the macro.
-

8. Assign a Macro

- a** - Click on 'MACRO'.
 - b** - Choose the macro from the list and click on the button you want to re-assign.
 - c** - Choose how the macro should be executed.
 - d** - Click on 'CONFIRM'.
- Click on 'Apply' → The mouse is being updated.
-

Profile Settings

9. Select, Save or Load a profile

- a** - Select one of the 5 profiles by clicking on the preferred profile.
 - b** - Click on 'SAVE AS' to save a setup, Click on 'LOAD FILE' to load a setup.
 - c** - Enter a name for the mouse setup you want to save, or choose the preferred profile to load.
 - d** - Click on 'Save' to save the setup, click on 'Open' to load the setup.
- Click on 'Apply' → Your mouse setup is now saved or update to your mouse.
-

10. Restore default settings

- a** - Click on 'RESTORE' to reset the current profile to factory default.
 - b** - Click on 'RESET ALL' to reset all profiles to factory default.
- Click on 'Apply' → The mouse is being updated.
-