

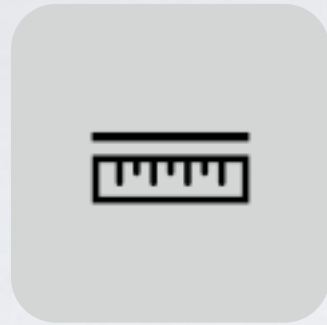


Creator 3

Creator 3 for larger build size, higher speed, and capable of printing water-soluble support with independent dual extruder.



Independent dual extruder



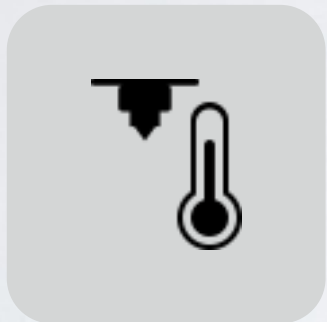
Accuracy of $\pm 0.2\text{mm}$



300*250*200mm



120°C heating plate



300°C heating Nozzle



Wide range of materials



FlashPrint software



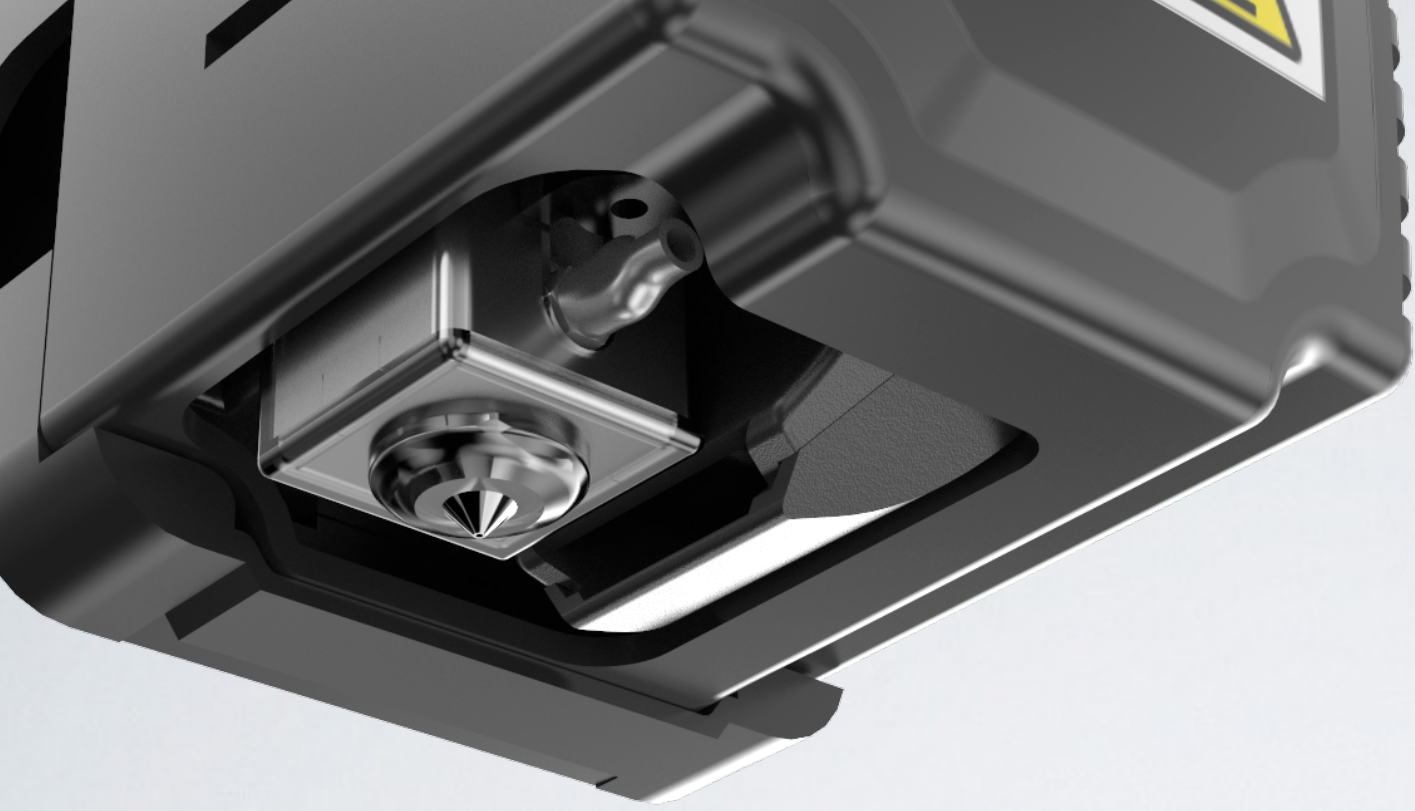
Cloud



X2 Output

INDEPENDENT DUAL EXTRUDER

Double efficiency of the Mirror Printing. Creator 3 make it come true that more complicated prints can be printed perfectly with independent dual extrusion and water-soluble filament. Make the impossible possible and achieve the expected printing effect.



300 °C

Integrated Nozzle design support 300 degree heating temperature. Wide range of materials allow printing according to users' need and achieve perfect print effect.



INTELLIGENT LEVELING

with extruder sensor

Totally automatic Z-axis calibration. You just click on the screen, the device will run automatically and the program will record the height data of left and right extruder.

The plate leveling is exceedingly simple because of nozzle sensor and visualization tips.

A detailed 3D rendering of a 3D printer's nozzle assembly. The nozzle is a small, metallic tip at the end of a larger, dark grey extruder. A special brush is mounted on the side of the extruder, designed to clean the nozzle. The brush has a black handle and a row of white bristles. The extruder has a warning label with a black exclamation mark and a yellow triangle with a black flame symbol. The background shows the internal components of the printer, including metal rods and gears.

Special Brush

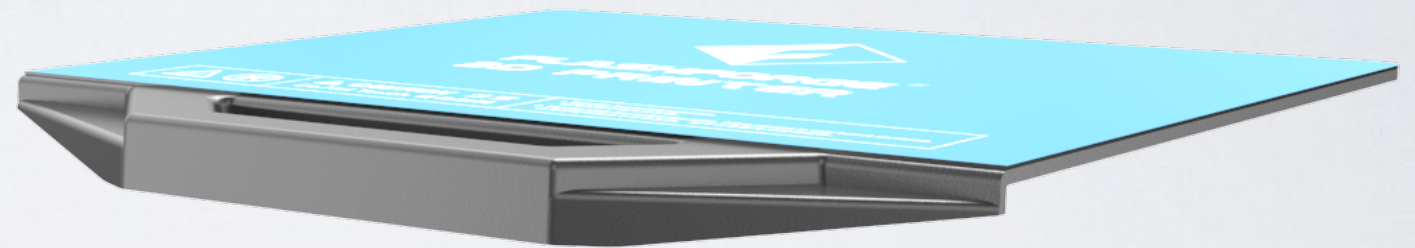
Special brush to remove extra filament which stick to the nozzle, keeping nozzle clean and good model quality.

FLEXIBLE BUILD PLATE

The prints are easy to remove from the build plate (Two solutions offered , one is removing small models by tools, the other is removing large models by bending flexible build plate).

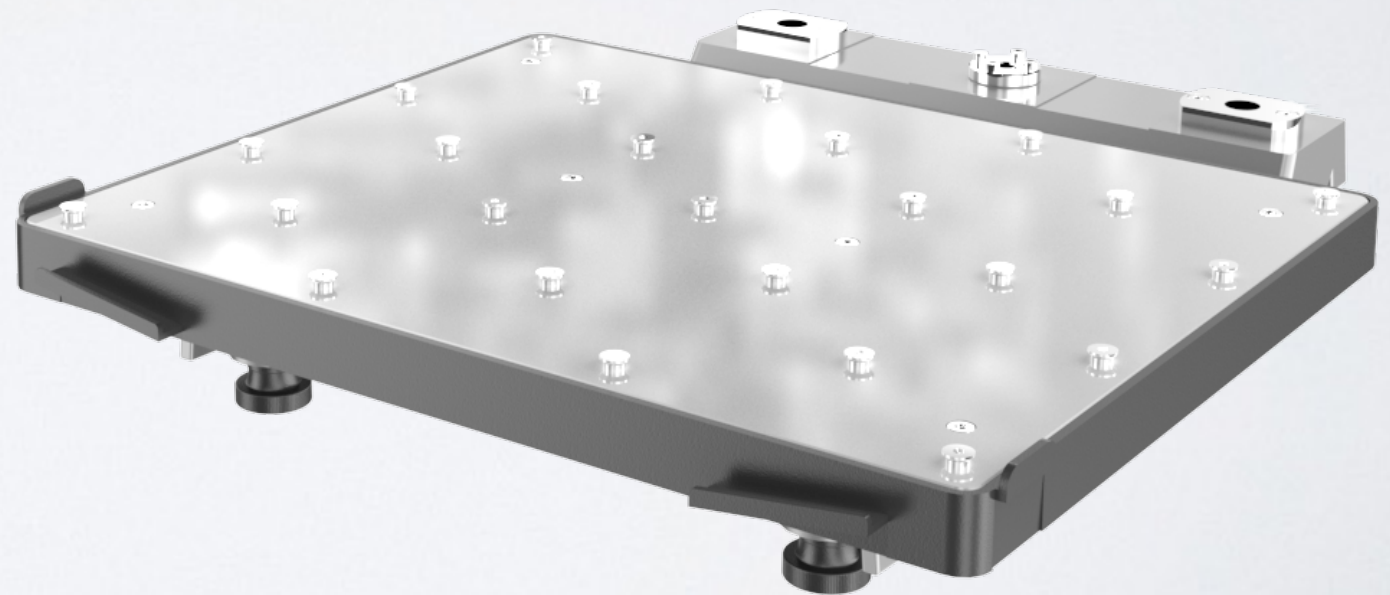
120 °C

Heating Plate



300*250*200 mm

Build volume





The Build-in Camera

The build-in camera helps to keep an eye on prints in case of incorrect settings, and helps to pause or abort printing via Wi-Fi by cloud.

4.5 inches touch screen

- Adjustable LED lights ensure an optimized 3D printing experience in any environment.
- Air Filter
- Filament detection



FLASHFORGE

**FLASHFORGE
3D PRINTER**

FILAMENT

Suitable for

PA		PLA		ABS		PVA
PETG		PC		PP		HIPS

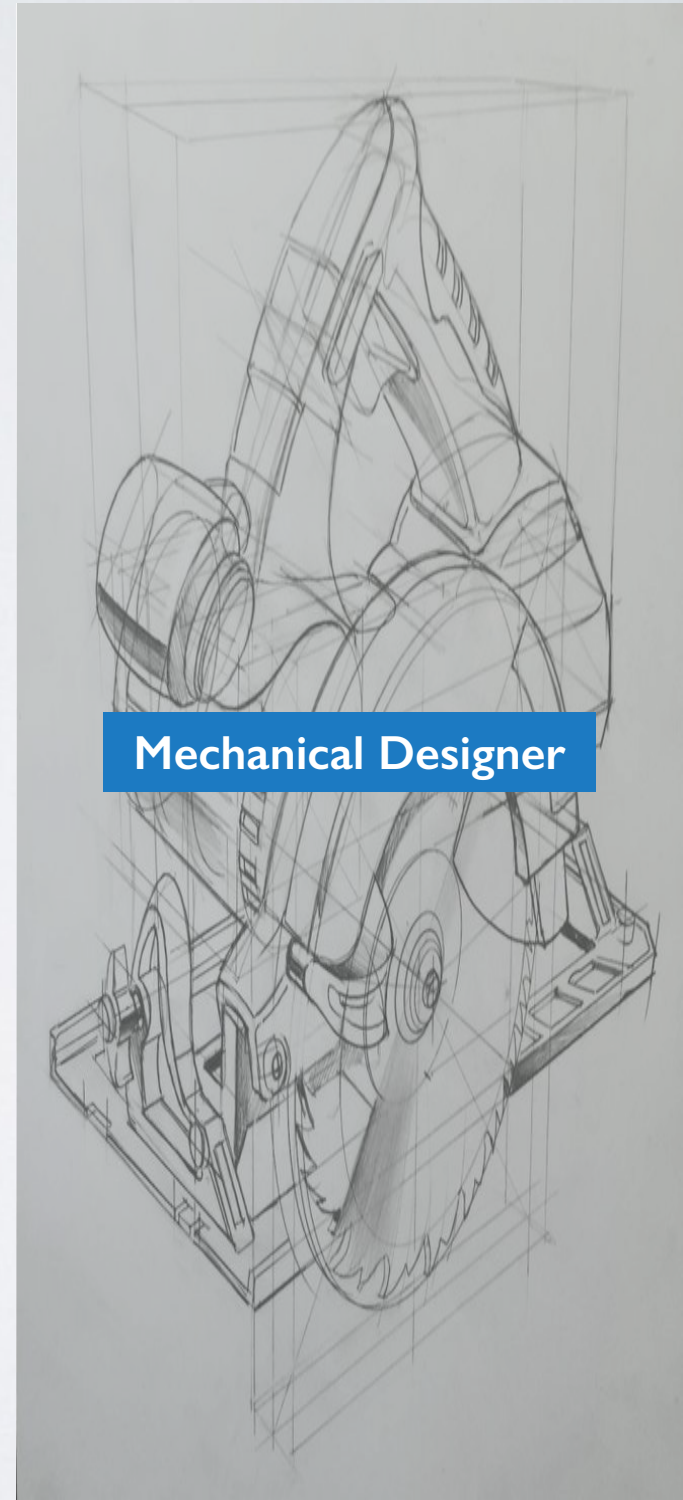
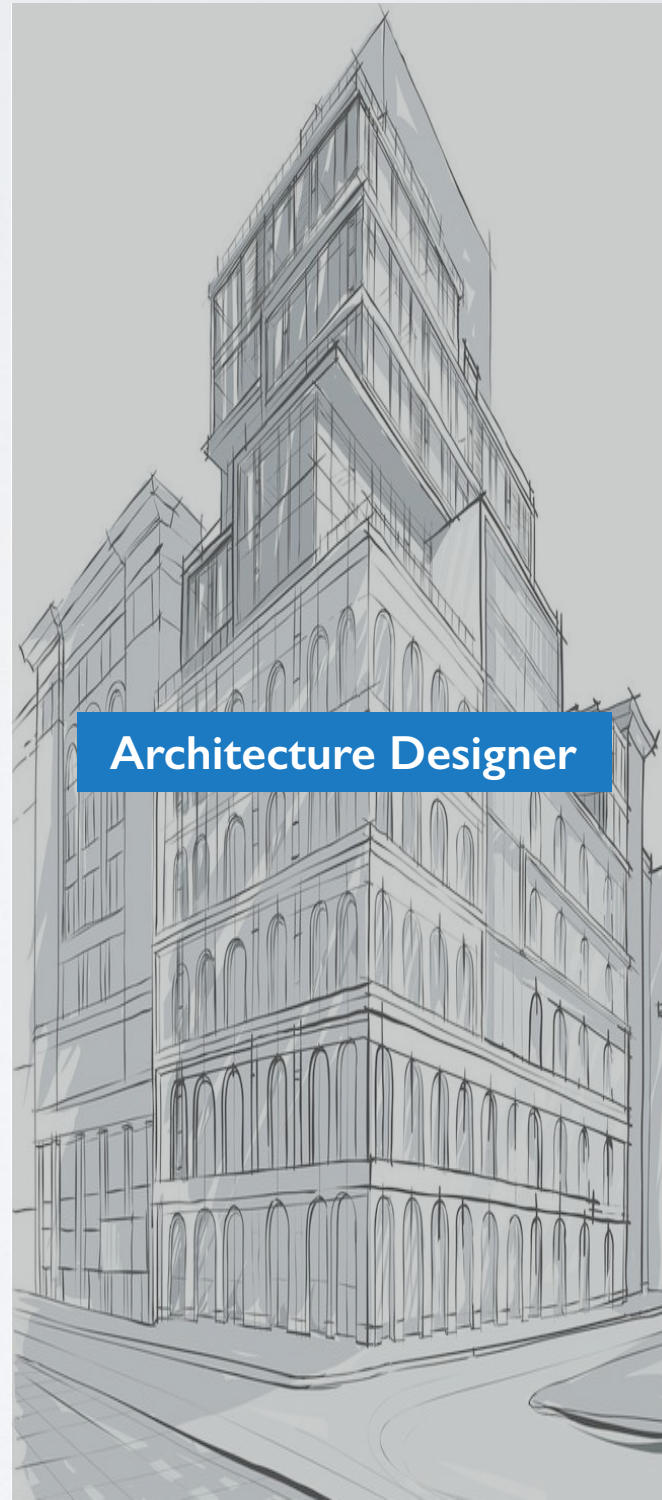
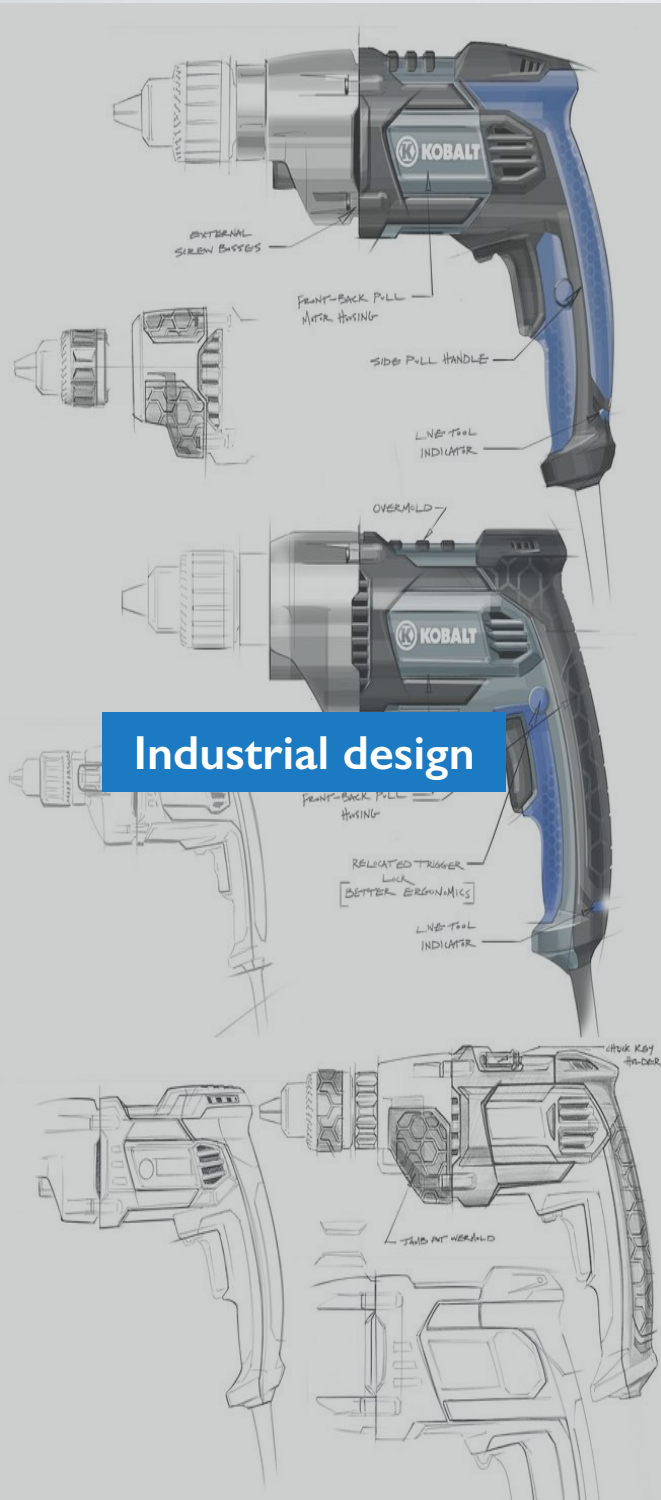
Combination

Left extruder

Right extruder

PVA	PA
HIPS	ABS
PVA	PLA

APPLICATIONS



MODELS

SPECIFICATION

Print

Build volume:	300*250*200mm
Nozzle temperature:	300°C
Nozzle number:	2, Independent
Nozzle diameter:	0.4mm
Build plate temperature:	Up to 120°C
Print speed:	10-200mm/s

Material

PLA, ABS, PVA, PETG, HIPS, PA, PC, PP

Device

Screen:	4.5 inches touch screen
Power:	100-240VAC, 48-63Hz, 500W
Dimensions:	627*485*615mm
Net weight:	40kg

Software

Software:	Flashprint
System:	Win 7/8/10; Mac OS; Linux
File type:	Input: 3MF/STL/OBJ/FPP/BMP/PNG/ JPG/JPEG Output: GX/G
Communication:	USB stick; Wi-Fi; Ethernet
Cloud:	FlashCloud; PolarCloud



**Your partner with industrial
professionally**