

13.3/16 Inch OLED Touch Portable Monitor

User Manual



Document Date: 10th Sep 2023












Document Version: 1.0

TABLE OF CONTENTS

Safety Precautions& Warranty Exclusions	1
OLED Pixel Statement	2
Disposal of Electronic Equipment	2
Content of the Package	2
Parts Description&Connection	3
OSD Menu Description&Setting	7
Display Setting	8
Capacitive Active Stylus Specification	15
Product Specification	15
Troubleshooting	15

Safety Precautions & Warranty Exclusions

Safety Precautions:

-  1. When carrying the Monitor, please put it into the protective cover with glass side inward and avoid pressing the monitor violently and rubbing the glass surface by any sharp objects.
-  2. The power input specification for the monitor is PD30W AC current. Inputting the Monitor more than rated voltage may cause shortages.
-  3. Please do not place the monitor on a shaky or unstable table, cupboard or trolley and do not use the Monitor on a moving vehicle. The Product may be severely damaged from overturning or falling.
-  4. Cleaning the Monitor Unplug the power input before cleaning. Please use soft cloth to clean touch screen. For stubborn stains, please use lightly-dampened cloth to wipe again. Do not use benzene, alcohol, thinner, ammonia, abrasive cleaners, compressed air or other corrosive solvents. These solvents may cause permanent damage on the screen or leave non-removable stain.
-  5. The product is not waterproof. Don't use it in or near water.
-  6. Do not insert any object into the Product's slots or gaps. Do not disassemble the monitor in any way.
-  7. Do not connect the AC adapter when maintaining the monitor.
-  8. Do not connect the AC adapter when not in use for an extended period of time.
-  9. Do not abuse or misuse the monitor by applying unnecessary force.
-  10. Avoid places of direct sunlight during storage.
-  11. Keep this monitor away from children.

Warranty Exclusions:

Please read the warranty terms below carefully, and follow the usage guide and precautionary notes. Please keep this manual for future reference.

Warning: The monitor can not be kept on a static image for a long time, otherwise it is easy to burn-in.

we do not warrant uninterrupted or error-free operation of this Product. The warranty only covers failure /malfunction under normal use conditions during warranty period. The warranty does not apply to the following conditions:

- (1)The bar code has been removed or worn down, and cannot be identified.
- (2)This product has been modified, disassembled, or refitted.
- (3)Display and touch function working normally; but variation in appearance (i.e., ageing, attrition, scratch, color changing and etc.).
- (4)Any breakdown caused by power supply. (i.e., inputting power over unsteady current)
- (5)Any damage caused by disoperation or failure to follow this manual. (i.e., Plug or unplug the cable in wrong direction and causing damage on cable or monitor.)
- (6)Any damage caused by hitting or cracking monitor accidentally or purposely, or collapsing or overturning monitor.

OLED Pixel Statement

There is slightly uneven brightness on the screen when displaying different screen pattern. The OLED screen has 99.99% or more effective pixels. 0.01% of pixels or less may not light or may light incorrectly. The monitor uses a high quality OLED panel. Nevertheless, pixels on the OLED screen may not light or appear as red or black dots. All the above are normal with the OLED monitor and will not affect the normal usage of the product. Avoid placing the monitor against sun-light, or it may damage the monitor. An afterimage of the previous screen may remain, when the same image is displayed for hours. In this case, the screen is recovered slowly by turning off the power for a few hours.

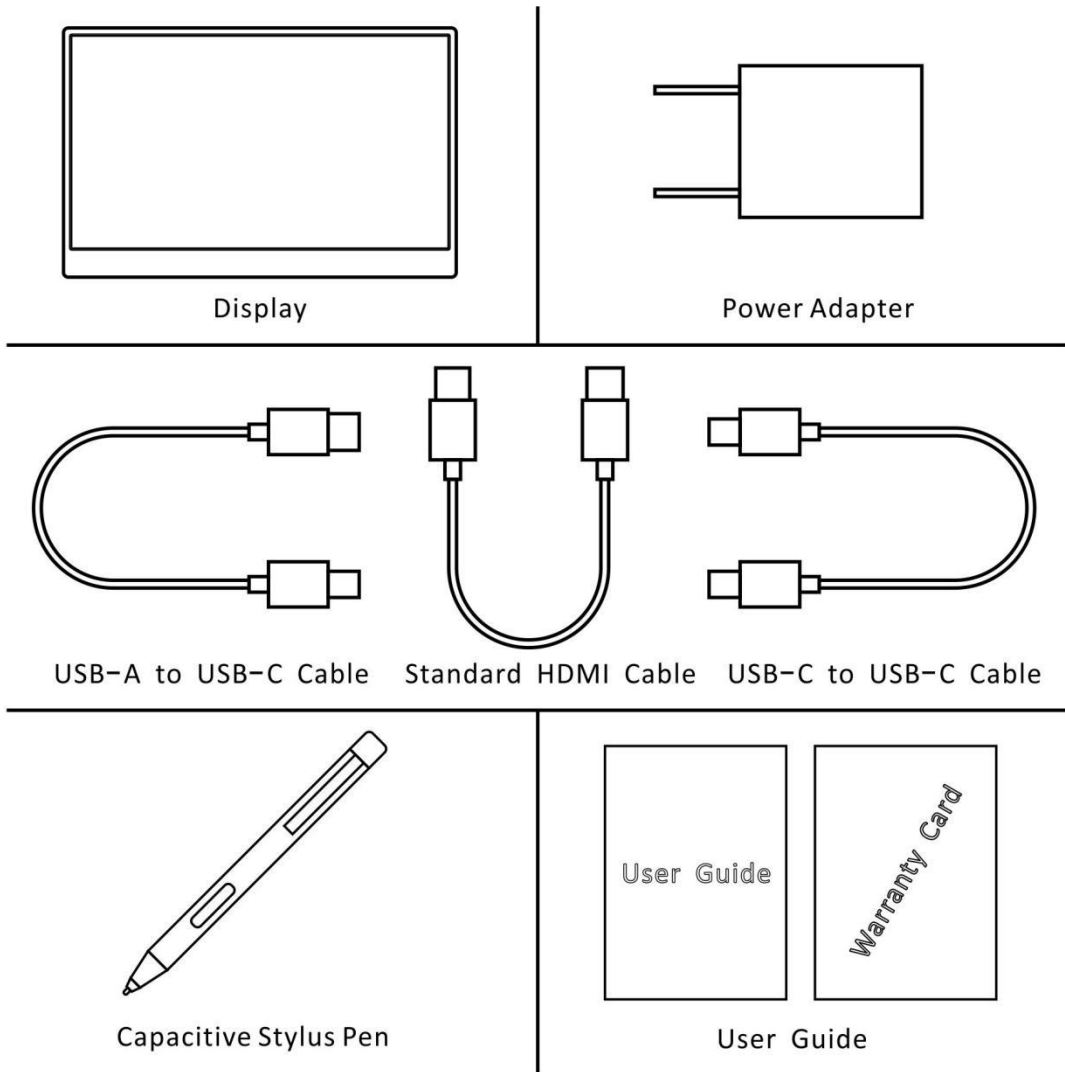
Disposal of Electronic Equipment

The electronic equipment and batteries should not be disposed with household waste but should be left at an appropriate collection point for recycling.



Content of the Package

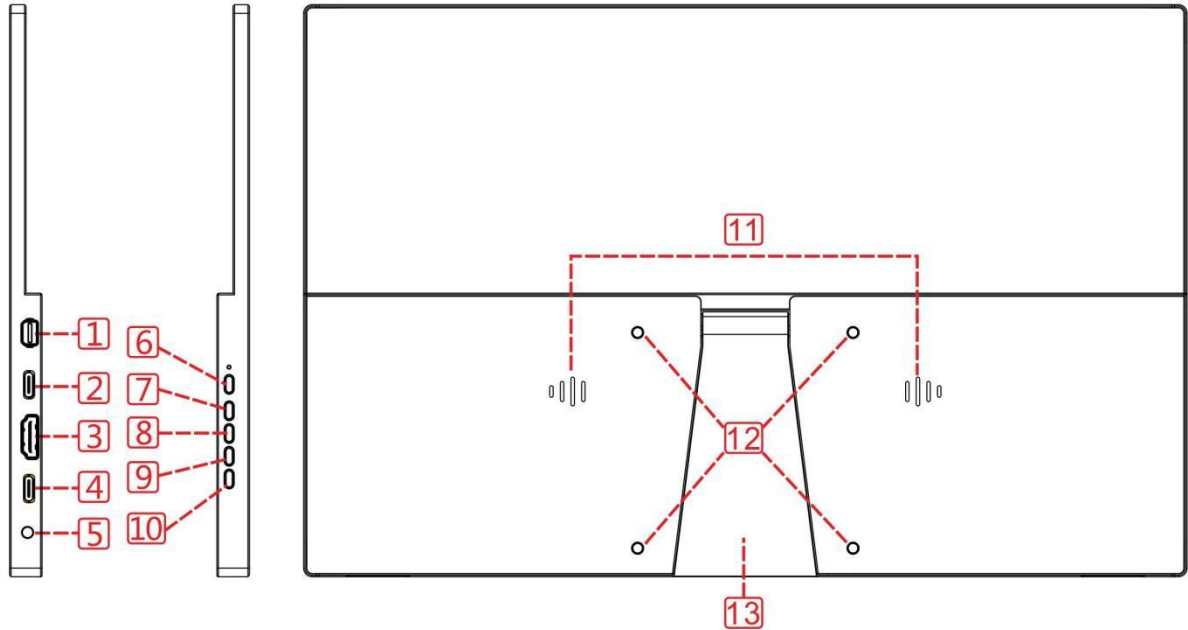
Before you open the packing of the OLED Monitor, please prepare a stable and clean desk that is near to the power plug on the wall for your monitor and computer.



*all the picture and component in this manual is for reference only. Please see the final product for detail information. We preserve the right to update the product without notice.

Parts Description&Connection

Function Description

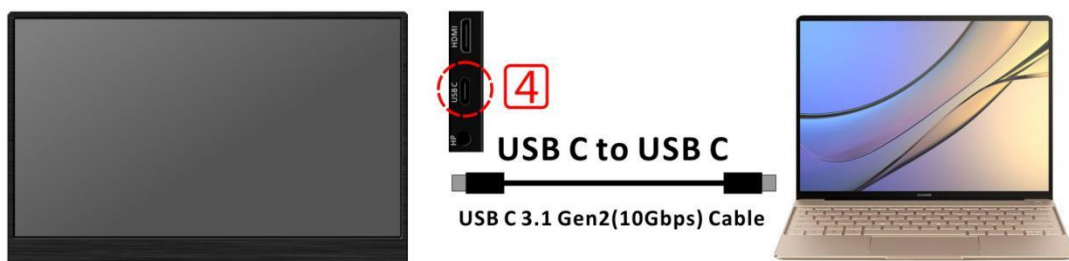


- ① Mini DP
- ② USB-C port(Power only)
- ③ Standard HDMI port
- ④ USB-C port
- ⑤ 3.5mm earphone output port
- ⑥ ☹ Power(on/off)
- ⑦ ⊕ Function increase(Volume,Brightness etc.)
- ⑧ ⊖ Function decrease(Volume,Brightness etc.)
- ⑨ ⊗ Exit
- ⑩ ☹ Open OSD Menu
- ⑪ Stereo speaker *2
- ⑫ 75*75mm VESA
- ⑬ Folding Bracket

Remark: ④ The USB C data port is a full-featured USB 3.1 port with power supply function, ② the USB C DC IN port is an auxiliary power supply port. Make sure the connection is correct when connecting the device.

Connection Description

1, Connect to laptop computer



(1) Connect to laptop computer with full USB-C functions(USB C support charging)

It can be connected to the full-featured USB 3.1 USB C port on a computer via the USB C to USB C cable provided to display the content on the monitor. Support Copy, extend, second display mode. One cable support power/signal/touch.

Note: it need to connect power supply provided when powered insufficiently (screen blinking).

*When no external power supply is available, the laptop computer will supply power to the monitor(when screen blinking it need lower the volume and brightness or connect adapter).

*When PD30W or above but no more than PD100W power adapter is used, it can be powered for the monitor and the laptop computer.

(2) Connect to laptop computer with full USB-C functions(USB C not support charging)

It can be connected to the full-featured USB 3.1 USB C port on a computer via the USB C to USB C cable provided to display the content on the monitor. Support Copy, extend, second display mode. One cable support power/signal/touch.

Note: it need to connect power supply provided when powered insufficiently (screen blinking).

*When no external power supply is available, the laptop computer will supply power to the monitor(when screen blinking it need lower the volume and brightness or connect adapter).

*When PD30W or other PD power supply is used, it is only power for monitor, not charge for the laptop computer, it need power by its own computer adapter.

(3) Connect to laptop computer without full USB-C functions

It can be connected to the hdmi port on a computer via the hdmi cable provided to display the monitor, the monitor power by provided adapter, the laptop power by its own computer adapter.

2, Connect to mobile phone with TV-OUT function



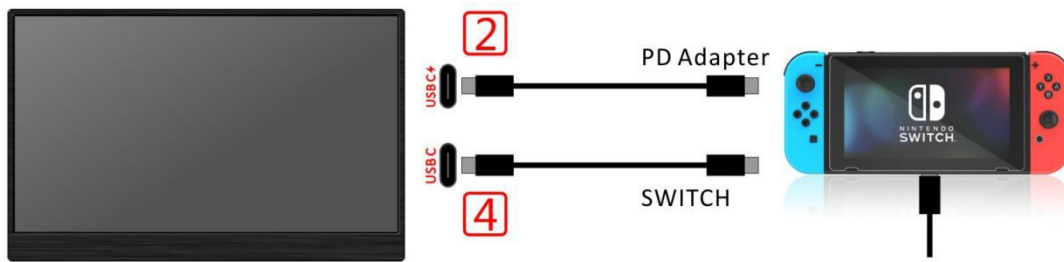
It can be connected to the mobile phone via the USB C to USB C cable provided to display the content from mobile to the monitor. One cable support power/signal/touch.

Note: it need to connect power supply provided for monitor when powered insufficiently (screen blinking)

*When no external power supply is available, the mobile phone will supply power to the monitor.

*When PD30W power supply is used, the monitor will charge the mobile, mobile original PD Adapter (above PD30W no more than PD100W) is recommend.

3, Connect to NS SWITCH



When an external power supply is used: the monitor can be connected to the SWITCH host via the USB C to USB C cable provided to enable the SWITCH TV mode.

*When use PD30W or the SWITCH original PD protocol power supply, the monitor will charge the SWITCH,It displays in the resolution of 1080P.

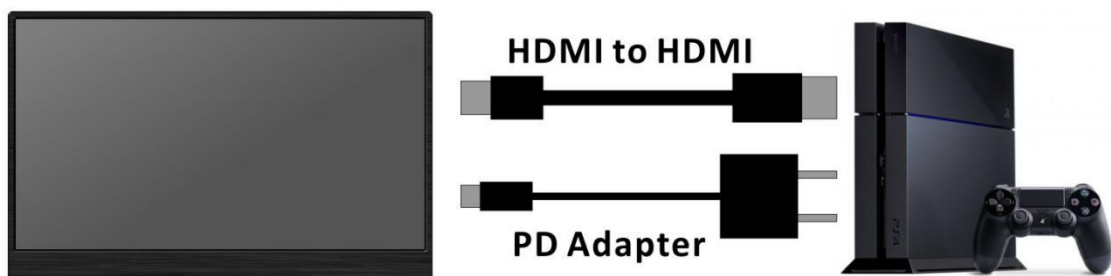
Remark: it must connect external power supply when use the SWITCH, or the monitor is blank.

4, Connect to HDMI port on PC



The monitor comes with a HDMI port and can be connected to most devices that output HDMI signal, please use the hdmi cable provided to connect the hdmi port on a computer, the monitor power by provided adapter.

5, Connect to game console

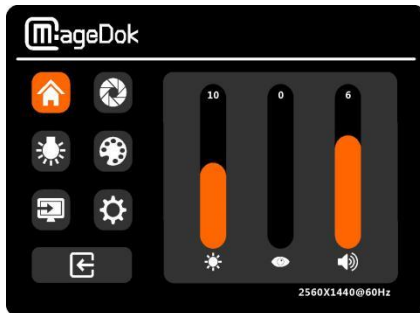


The monitor comes with a HDMI port and can be connected to most game console, please power on the monitor using the power supply provided before connecting external HDMI signals to ensure smooth signal transmission.

Warning: The monitor can not be kept on a static image for a long time, otherwise it is easy to burn-in.

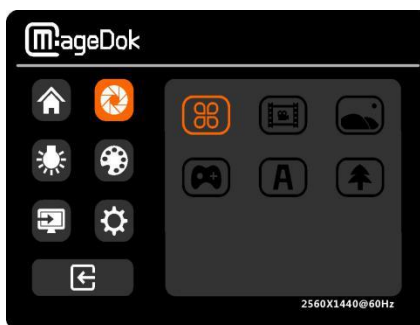
OSD Menu Description&Setting

HOMEPAGE



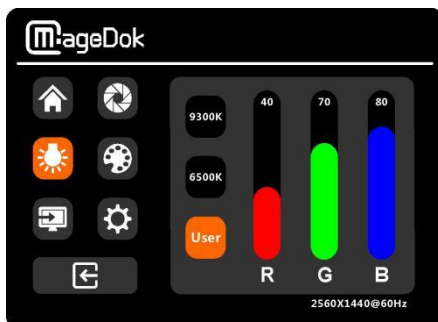
Press "MENU" Key to show the main menu, then press "+/-" key to choose HOMEPAGE Menu.
BRIGHTNESS: Adjust the brightness of the display.
LOW BLUE: Select the blue light of the picture.
VOLUME: Adjust the volume of the monitor.

MODE



Press "MENU" Key to show the main menu, then press "+/-" key to choose MODE Menu.
ECO: Select the picture mode among Standard, MOVIE, PHOTO, GAME, TEXT, VIVID.

COLOR



Press "MENU" Key to show the main menu, then press "+/-" key to choose COLOR Menu.
COLOR: Adjust the display color temperature mode.

PICTURE



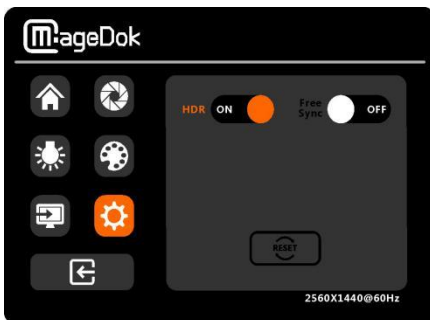
Press "MENU" Key to show the main menu, then press "+/-" key to choose PICTURE Menu.
HUE: Adjust the hue of the display.
CONTRAST: Adjust the contrast of the display.
SATURATION: Adjust the saturation of the display.
SHARPNESS: Adjust the sharpness level of the picture.

SIGNAL



Press "MENU" Key to show the main menu, then press "+/-" key to choose SIGNAL Menu.
SELECT SIGNAL SOURCE: select the display port connect mode(usb c, hdmi, Mini DP)

SET




Press "MENU" Key to show the main menu, then press "+/-" key to choose SET Menu.
HDR: Select the HDR function working mode
RESET: Press to restore factory settings.

Note: Double fingers slide down in the bottom right corner of the screen to bring up the OSD menu, when OSD menu shows in the display, it only can be touched menu, other areas can't be touched, if you want to touch other areas, you need to exit the OSD menu.

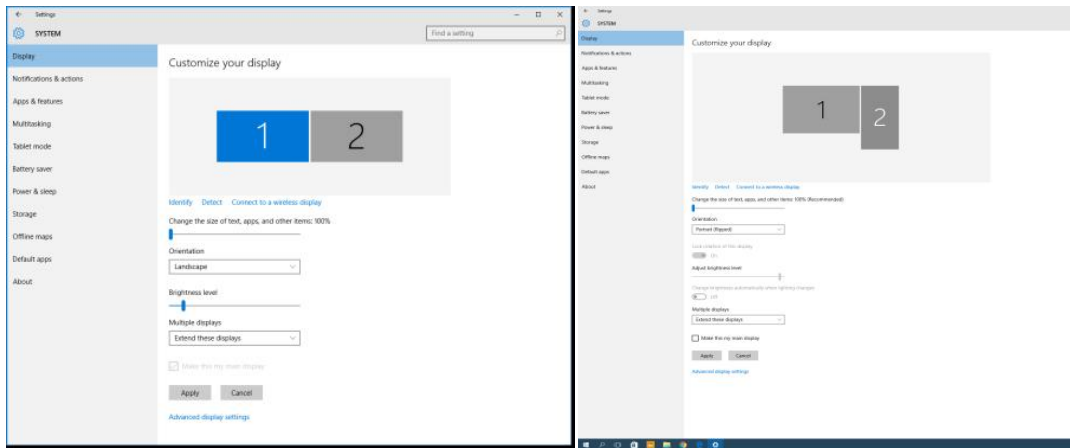
Display Setting(PI-X3 Pro for example)

1. Set Extended Display Mode-Windows 10 System

Click , then select **【Settings】** → select **【System】** → Select **【Display】** → Choose "Extend these displays" at Multiple displays.

Select "3840x2160" at Resolution; Select "Landscape" at Orientation for horizontal display, select "Portrait" for vertical display. Click Apply and exit.

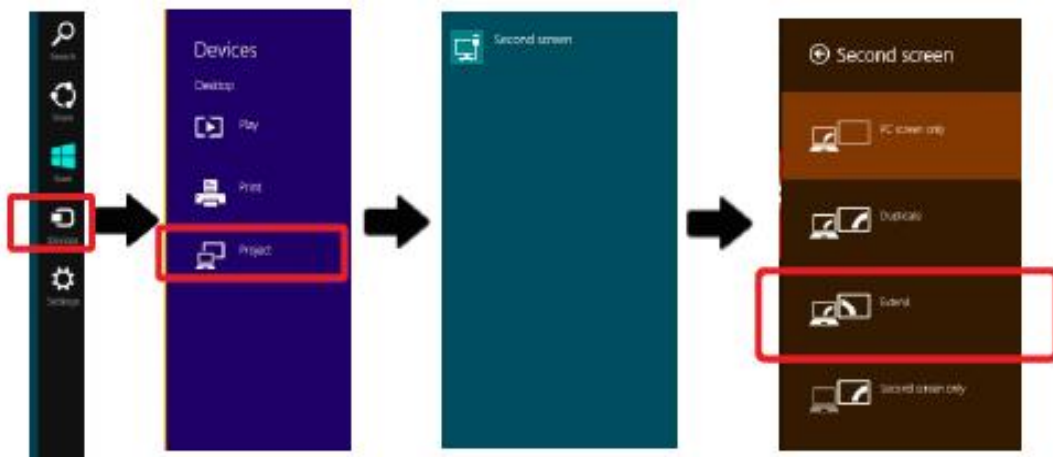
If not see the "3840x2160", pls choose the most suitable resolution.



2. Set Extended Display Mode-Windows 8.1 System

Select directly from right side of screen [Devices]->select [Project]->select [2nd Monitor]->select [Extend Mode].

For screen resolution setting please refer to the followings.



3. Set Extended Display Mode-Windows 7 System

Click  on icon

Click on Control Panel > Appearance and Personalization

Click on Display > Connect to an external display.

Normally Display ① is the laptop's monitor, Display ② is the external monitor.

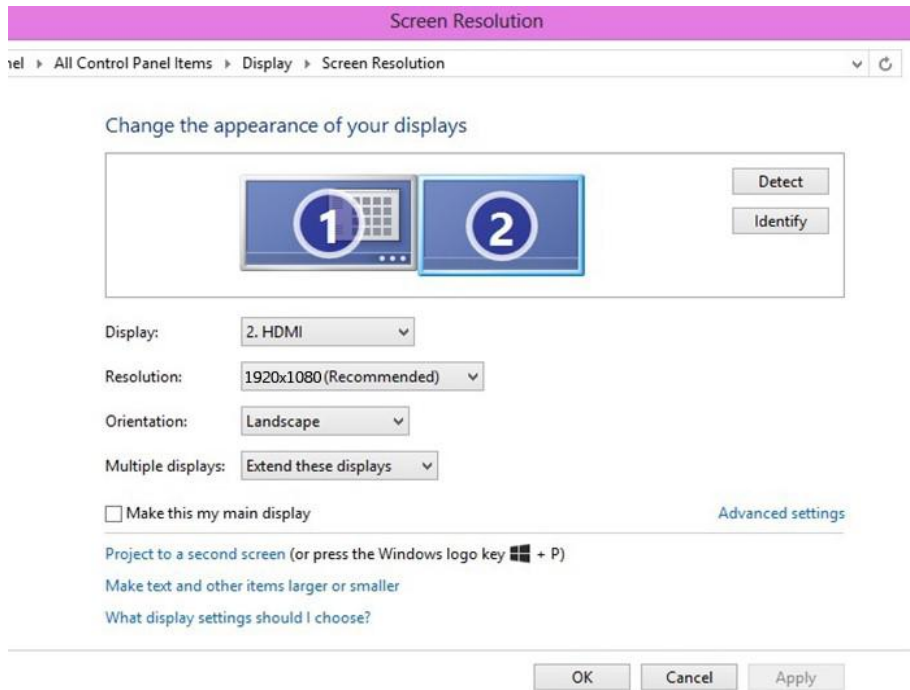
Click on Detect if you are unsure.

At Display, select "2.HDMI" (digital video) or "2. display device: VGA" (analog video) for Display


Select Resoluton "3840x2160" for the Monitor, Select "Landscape" or "Portrait" for Orientation.

If not see the "3840x2160", pls choose the most suitable resolution.

Select "Extend these displays" for Multiple display, and drag Display 2 to the right side of Display 1. For Duplicated mode, select "Duplicate these displays". Select OK and exit after saving the settings.



4. Settings of Extended Display on Mac (OS X)

Click  , then select **【System Preference】** → choose **【Arrangement】** tab, and uncheck "Mirror Displays". Select one of the blue rectangles, and drag to the desired position.



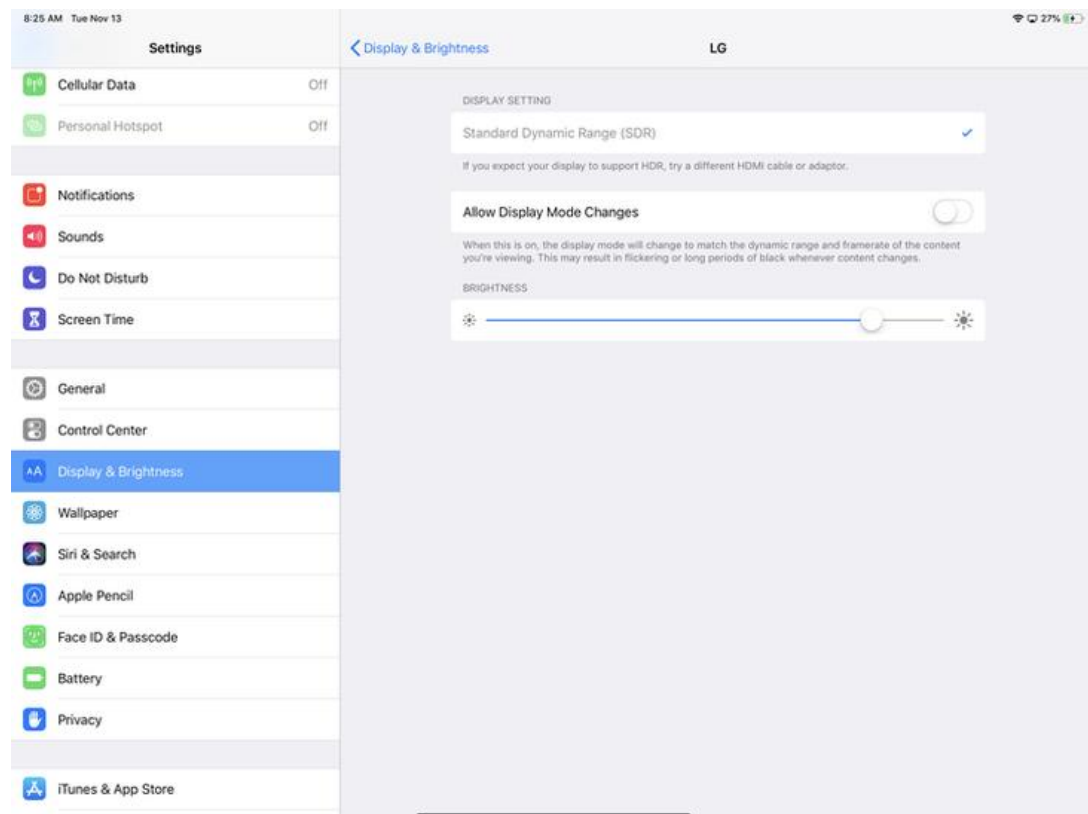
Click **【Display】** tab, select resolution of the laptop firstly, then click "Gather Windows", and select resolution you want.

5. Settings of Extended Display on iPad Pro

In most cases, connecting the iPad pro to the monitor only mirror the iPad's display. Users see the same content on the iPad as on the monitor. However, some applications can be split screen operation. IMovie for example, can display editing on the iPad or put it on the monitor by selecting the external display button. Other applications, such as Adobe's Lightroom, do not support the feature.



If you find some problem with the output quality displayed on your monitor , you can open Settings > “show and brightness”, and then select the currently connected display. Users can adjust the brightness of the external display and customize the output of the iPad pro.



6. Settings of Extended Display for game device

It can work as a computer monitor just like any other general HDMI screen,like 360Xbox,PS5,PS4 games devices and so on. It is plug and play, making sure the USB-C

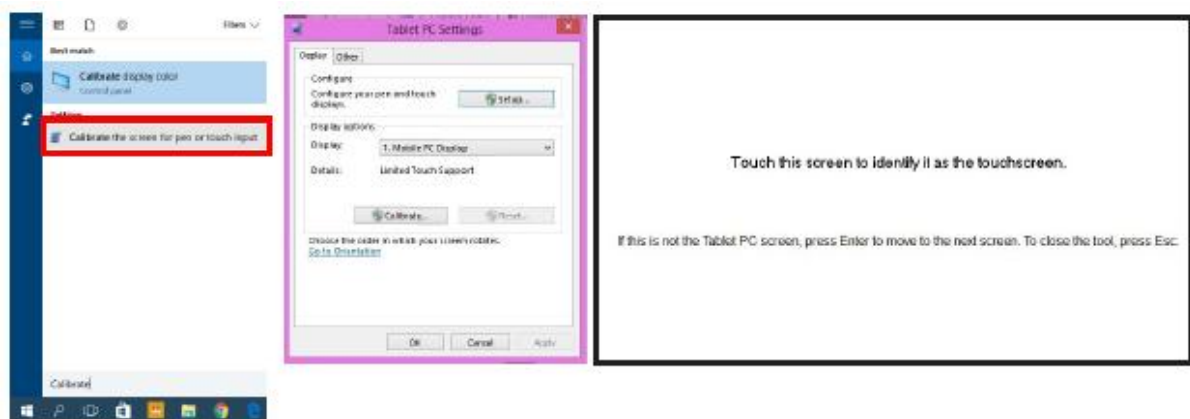
power cable and Hdmi cable is right connection. For Nintendo switch, It is also plug in and play. Use the Original Adapter, One single power cable can power for Monitor and Switch,keep mind the switch battery can't provide enough power both for the monitor and itself, need extra power.

7. Windows touch set

If your laptop computer had been installed the Windows 7, 8 or 10 system, the touchscreen is Plug in and play, making sure all the cable is right connection.

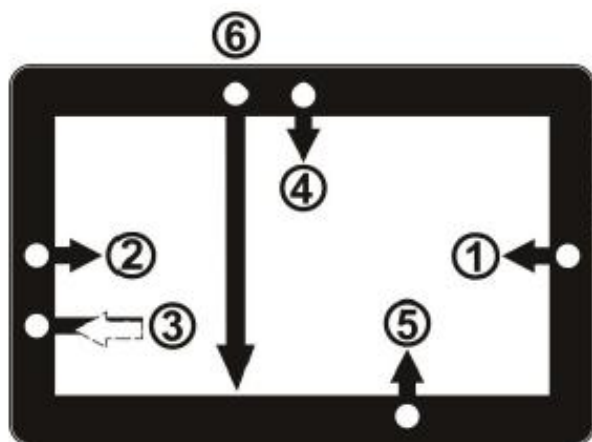
8. Windows 10/8.1/7 Touchscreen Setting

If you find the cursor acts wrongly, please calibrate the monitors at Windows system. Please connect touch monitor to laptop first, if not, the calibration can't be begun. In Windows 7, Select 'Tablet PC Setting' of Control Panel to calibrate touch input. In Windows 8.1/10, search"Calibrate the screen for pen or touch in-put"on your PC. As Fig., please select "Setting (S)", when Windows message appears on the screen , follow the direction to touch the screen and the setting is complete.



Windows 10/8.1/7 Touch Gesture Description

Common Touch Gesture Introduction:

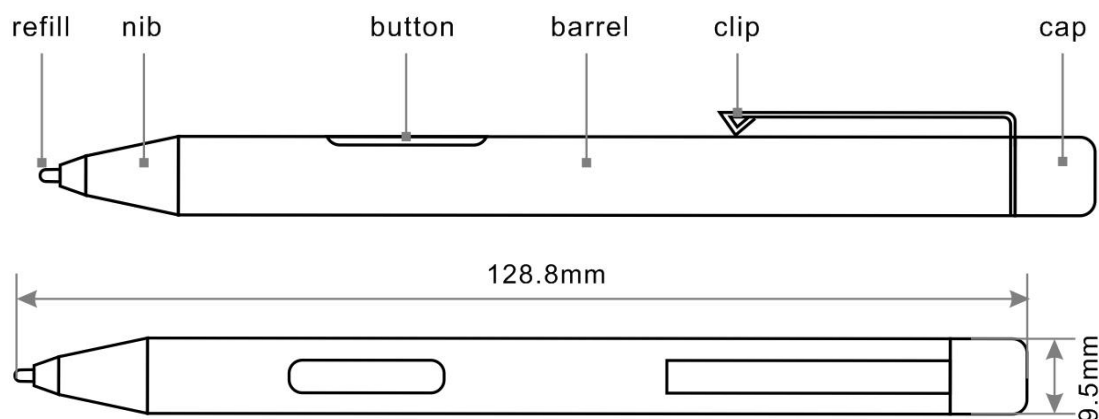


1. Use finger to swipe in from edge:

- ① Swipe in from the right edge of the screen (Arrow 1) : Open the five charms – Search, Share, Start, De-vices, and Settings
 - ② Swipe in from the left edge of the screen (Arrow 2) : Switch be-tween apps
 - ③ Swipe in from the left edge of the screen then out toward the left edge of the screen (Arrow 3): Display all apps
 - ④ ⑤ Swipe in from the top edge (Arrow 4) or bottom edge (Arrow 5): Display commands of app, like Add New, Reminder, etc.
 - ⑥ With touch, drag the app from the top edge of screen (Arrow 6) to the bottom of the screen: Close app
2. Select item: Tap on the item to open. This function is similar to clicking on mouse.
 3. Press and hold the item for a few seconds then release: Display item information. This function is similar to right-clicking on mouse.
 4. Zoom in and out: Touch the item with two fingers then move fingers toward each other (pinch) or away from each other (stretch).
 5. Slide finger on the screen, horizontally or vertically, to move through content. This function is similar to scrolling with a mouse.

Capacitive Active Stylus Specification

1, Product Appearance And Dimensions



2, Hardware Specifications

	Item	Specifications
Suitable model	Brand	Surface series
	Quantity	2
Button	Function	According to Windows system definition

	Button pressure	300 ± 50gf
Refill	Can be replaced or not	Yes
Battery	Model	LR61-9 (AAAA) zinc manganese dry battery (Not included in the package)
	Nominal voltage	1.5V
	Cutoff voltage	0.9V
Ambient temperature	Storage conditions	Temperature: -20°C ~ 60°C Humidity: 10% ~ 90%RH
	Operating conditions	Temperature: 5°C ~ 40°C Humidity: 20% ~ 80%RH
Pressure rating		Level 1024
Operation mode	Working mode	The refill touches the screen, it is in working mode when the pressure changes continuously
	Sleep mode	Enter the sleep power saving mode without pressure change for 5 minutes
	Hover mode	The distance between the refill and the screen is less than 5mm (the screen is not touched), and the cursor appears on the screen, indicating that the active pen has been awakened and ready to enter the working mode
	Hover height	≥5mm depending on the working machine

3, Electrical performance


Operation mode	Voltage (V)	Maximum current (μA)
Working mode	1.5	100±15%
Sleep mode	1.5	20±15%
Hover mode	1.5	50±15%

4, Replace the battery

Unscrew the cap counterclockwise and replace it with a genuine battery manufacturer's LR61-9 (AAAA) zinc manganese dry battery, taking care not to reverse the positive and negative poles(The battery is not included in the package)



Product Specification

Model No	PI-X3 Pro	PI-X9
Panel Size	13.3 inch	16 inch
Resolution	3840(RGB)×2160 [UHD]	3840(RGB)×2400 [UHD]
Touch	Yes	Yes
Brightness	400cd/m2 (Typ.)	400cd/m2 (Typ.)
Contrast Ratio	100,000:1(Typ.)	100,000:1(Typ.)
Frame Rate	60Hz	60Hz
Display colors	1,074M(RGB 8bit+2FRC)	1,074M(RGB 8bit+2FRC)
Display Mode	OLED	OLED
Color gamut	100% DCI-P3	100% DCI-P3
Display angle	178 Degrees	178 Degrees
Response Time	1MS	1MS
W:H	16:9	16:10
Active Stylus	Support MPP protocol Stylus	Support MPP protocol Stylus
Product Size	307.6*199*5.7(11.3)mm	358.2*241.6*5.7(11.6)mm
Product Weight	700g	1000g
VESA Hole	75*75mm	75*75mm
Operating Temperature	-20~70°C	-20~70°C
Storage Temperature	-40~85°C	-40~85°C
Certification		

Troubleshooting

Q1: If is the monitor must be extra power for the monitor?

Yes, it need to connect power supply we provided.

Q2: The Monitor shows: “No signal” ,how to solve it?

please connect the power first, then check the HDMI cable and usb-c power cable has been firmly connected to the monitor's port. In the OSD menu, Make sure the power key is open.

Q3: Randomly no display or go blank Or showing "Insufficient Power Warning" on the monitor. What to do it?

- 1.Please avoid pulling the cables.
- 2.Please connect to a PD30W adapter to ensure the power supply is enough.
- 3.Lower the volume and the brightness. High volume and brightness may increase power consumption and cause the monitor going off.

Q4: Monitor has image, but No Sound coming out?

Please check volume settings whether Mute has been turned on or not first. Monitor's audio jack is for audio output, not input. Users can not input the audio. When connecting a cable to the monitor's headphone jack, the Monitor will turn off the internal speakers

Q5: Why my monitor shows Out of Range?

It means the video source inputted is not in monitor's supported video input formats, and the monitor cannot display the resolution or the frequency normally. Please check monitor's supported operating modes.

Q6: Why it is no signal when I use the USB-C to USB-C Cable in the USB C device?

1. Please make sure the USB C device supports the video input
2. Make sure use the USB-C 3.1 Gen 2 (10 Gbps) Cable
3. It needs to connect the USB C-2 power port when powered insufficiently by USB C-1

Q7: Why my device has USB C, connect the USB C 3.1 Gen 2 cable but no video?

For some Terminal equipment manufacture, the USB C does not support USB C Alt mode, the hardware cannot provide the video signal.

Q8: Does it need USB C converter when connect the Nintendo Switch ?

No, it doesn't need. It is plug and play. Use the Original Adapter, One single power cable can power for Monitor and Switch.



Thanks for your order!

If you have any product or technical issues,

please do not hesitate to contact us:

support@magedok.com