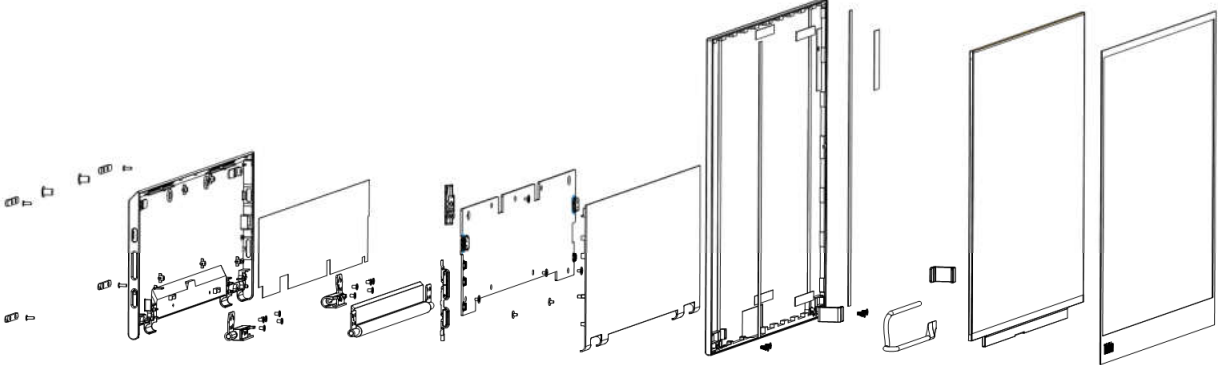


# M14d Simplified service manual for dismantling

Model Name: Lenovo M14d

Exploded Diagram



# 1. Precaution

Please read the precaution as follows to prevent any damages to the LCD Monitor.

Make sure all power connector is removed. Be sure that the LCD Monitor is in power off status.

Prepare soft cloth and sponge as working platform to place LCD monitor horizontally.





Hold LCD by the side carefully and DON'T touch or press panel directly.



## 2. Appropriate tools

Select the Appropriate tools for disassembly and re-assembly.

<p>Phillips screwdriver (#2)</p>	
<p>C/D disassembly tool</p>	
<p>Gloves or soft cloth</p>	

### 3. Disassembly SOP

<p>Put the monitor on a flat surface (Put the EPE on under the monitor)</p>	
<p>Remove the rubbers * 4pcs Tool : Hand</p>	
<p>Remove the screw * 4pcs Tool : Screwdriver #2</p>	
<p>Remove the screw * 2pcs Tool : Screwdriver #2</p>	

Release base top cover  
(Notes: three hooks)



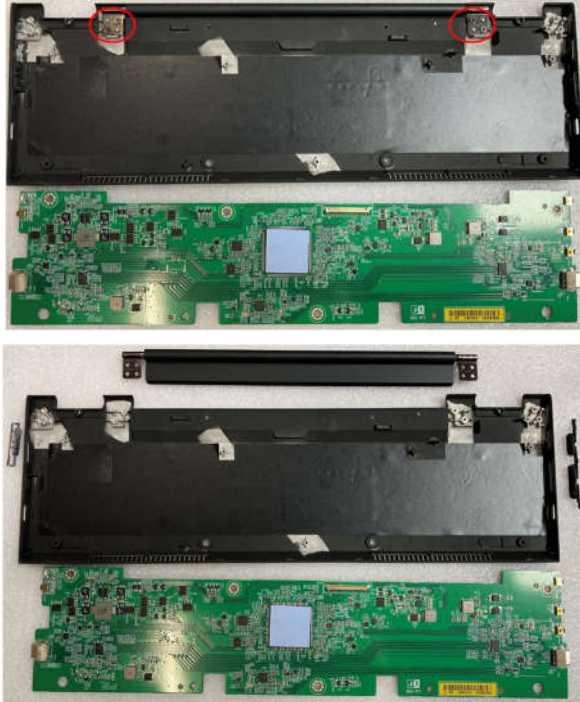
Remove the hinge screw\* 6pcs.  
Unplug edp from PCBA  
Tool : Screwdriver #2



Remove the PCBA screw\* 4pcs.  
Tool : Screwdriver #2



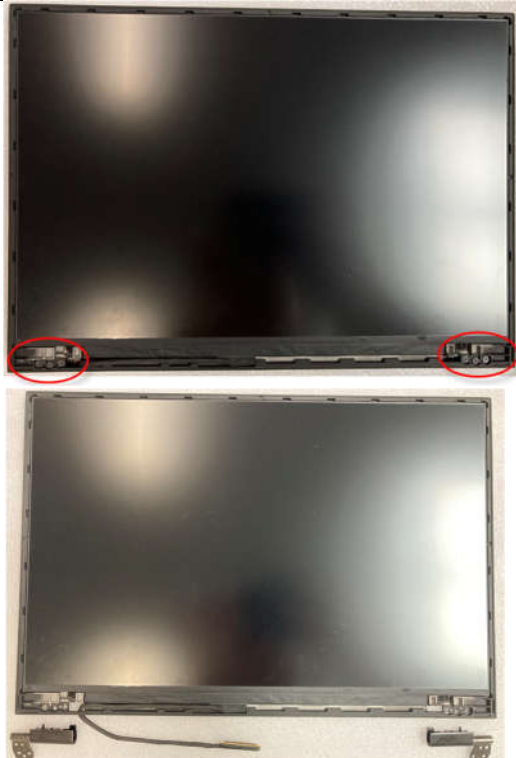
Remove the Tilt-foot screw\* 4pcs.  
Take out the buttons  
Tool : Screwdriver #2



Take off mylar bezel from back cover



Remove back cover screw\* 6pcs.  
Tool : Screwdriver #2



Peel off double-sided tape and  
Take out Panel .



Unplug edp line from panel





Remove all gasket and thermal pad

