

# KLIM SKILL USER MANUAL



To adjust the DPI level press 1 to increase, and 2 to decrease. You can see at which DPI level you are looking at the LED line (3).

You can program any buttons and much more by downloading our driver at this address  
=> <http://klimtechs.com/driver>

The KLIM Skill is Plug and Play, you plug it and it should work.

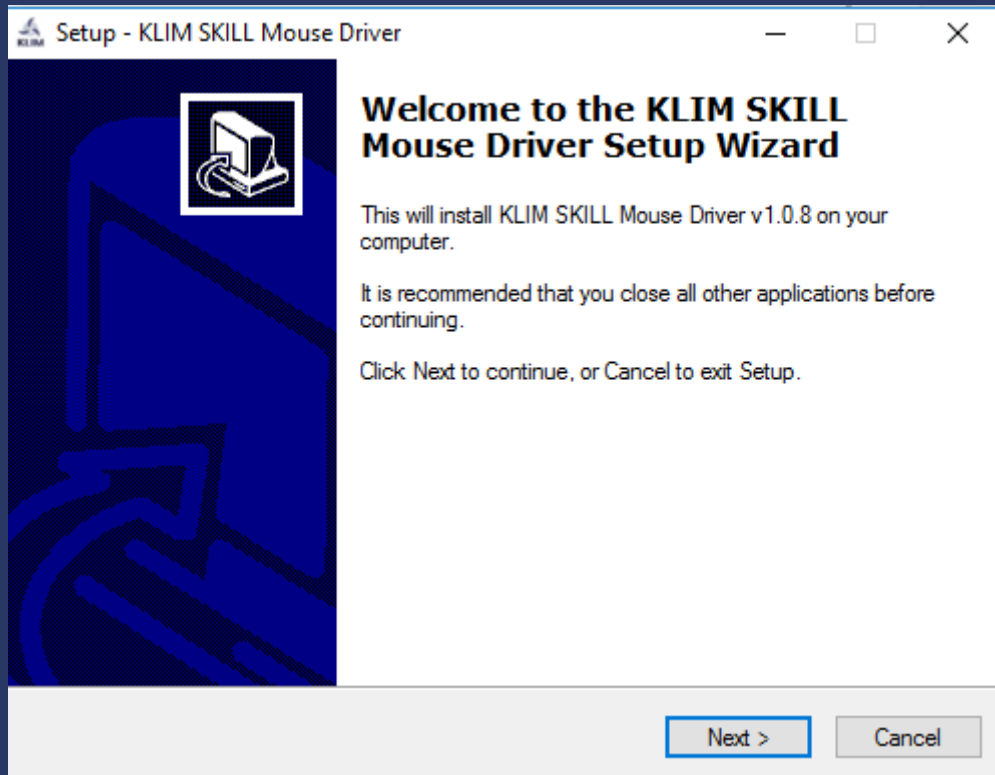
The driver should be simple enough to navigate.

However, if you encounter any difficulties, big or small, please don't hesitate to contact us.

## Step 1:

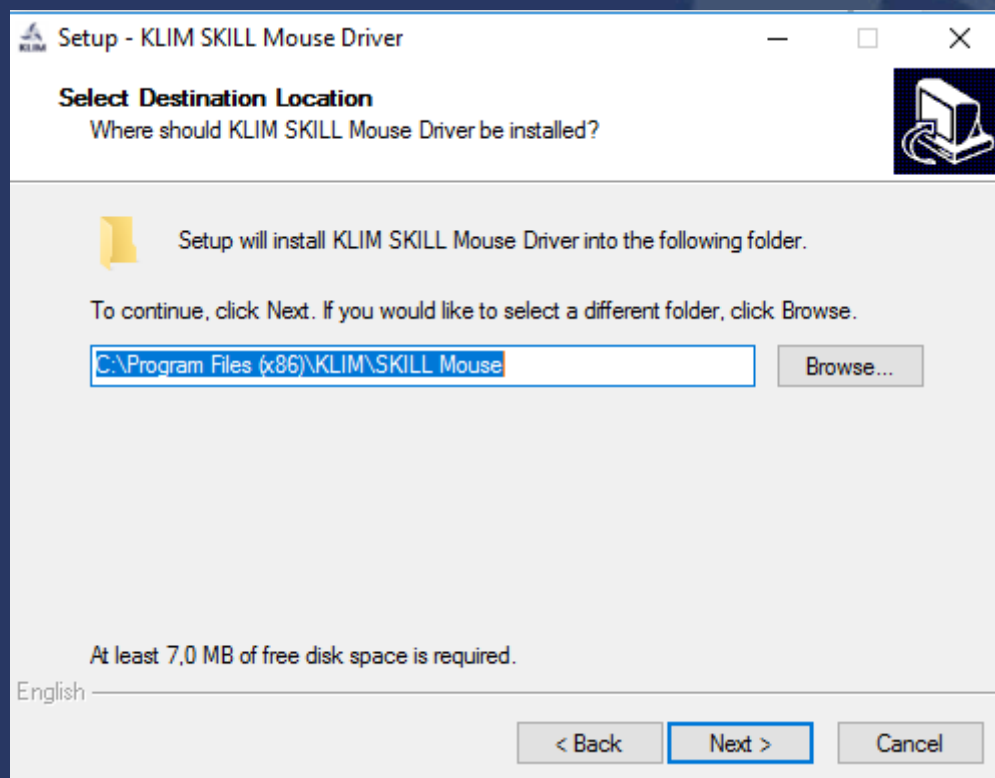
Download the driver from our website, use WinRAR or any similar unzipping software to open the ".zip" file. Then double click on the ".exe" file to launch the installer.

## Step 2:



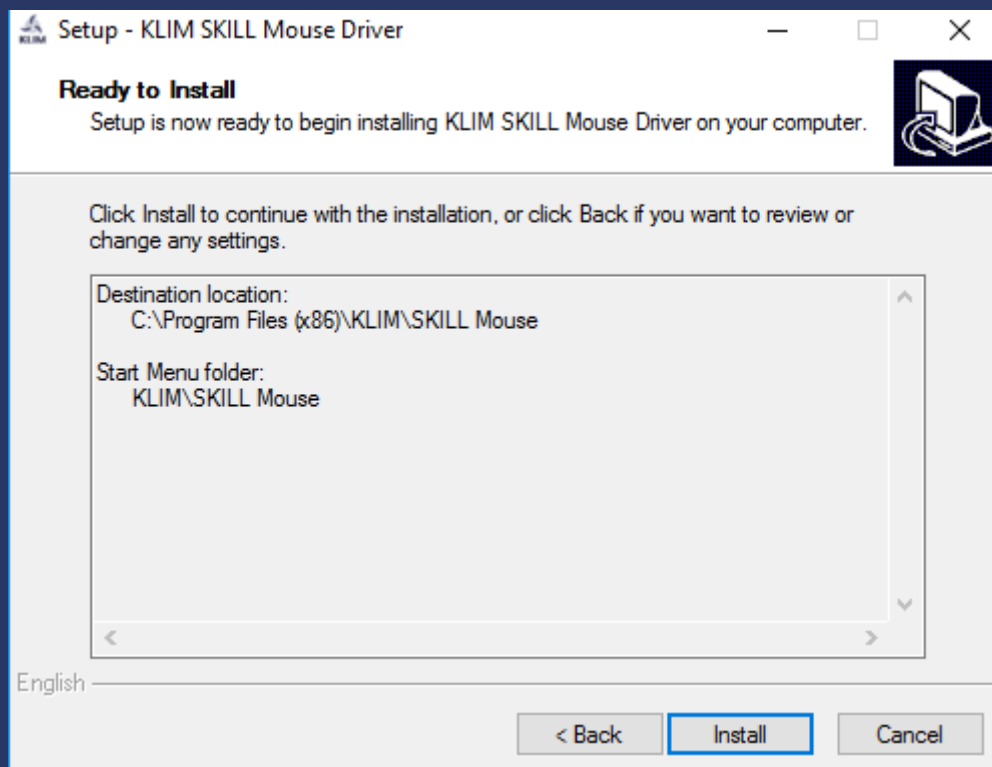
Click "Next".

## Step 3:



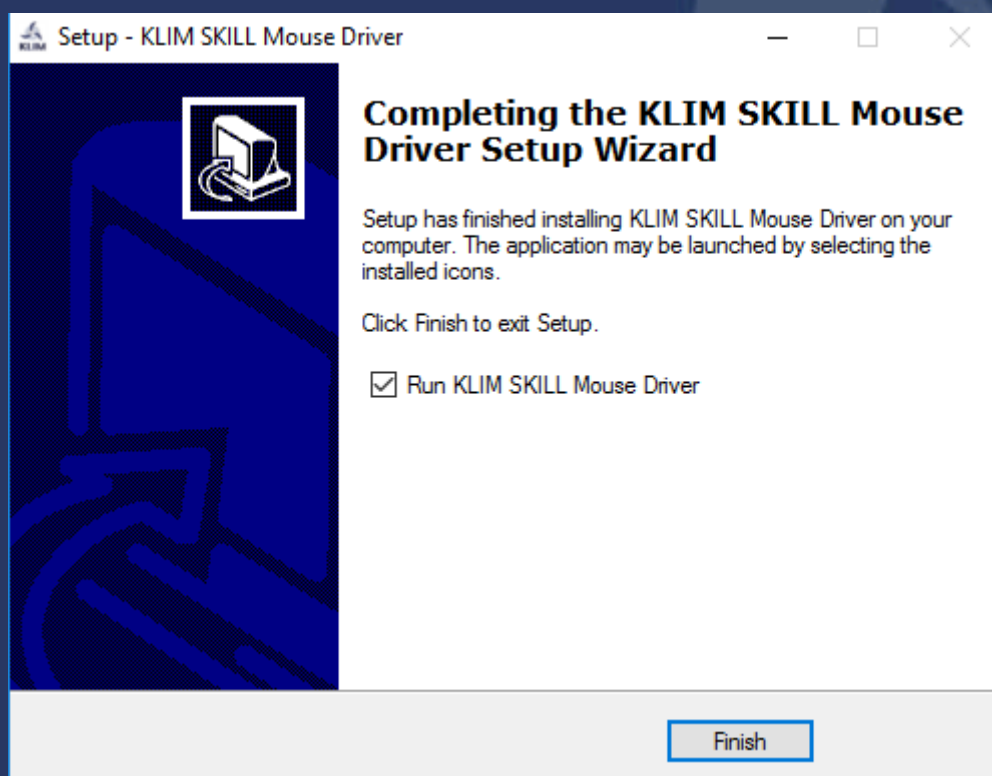
You can select which folder you would like to install the driver in, we suggest you simply click on "Next".

## Step 4:



Click on "Install".

## Step 5:



Tick "Run KLIM SKILL Mouse driver" and click on "Finish".

## Step 6:



This is the driver's main menu:

1. Here you can configure the buttons and the general settings of your mouse. The choice of buttons is quite extensive, from simple left/right clicks to multimedia options (play/pause on a video, mute, opening a browser window...) or even in-game commands.
2. This is the refresh rate, we recommend you avoid it unless you know what you're doing.
3. Mouse sensitivity and the "improve pointer precision" option. We recommend you keep sensitivity on 4, 5 or 6 and, if you're playing a high precision game we recommend you deactivate the "improve pointer precision" option. You can Google this for more information.
4. Mouse scroll speed, this is mostly unimportant except in very specific cases.
5. Double click speed, again, mostly unimportant, except in a few very specific cases.
6. You can save up to 5 different profiles, this can be useful if you need a different profile when playing different games.

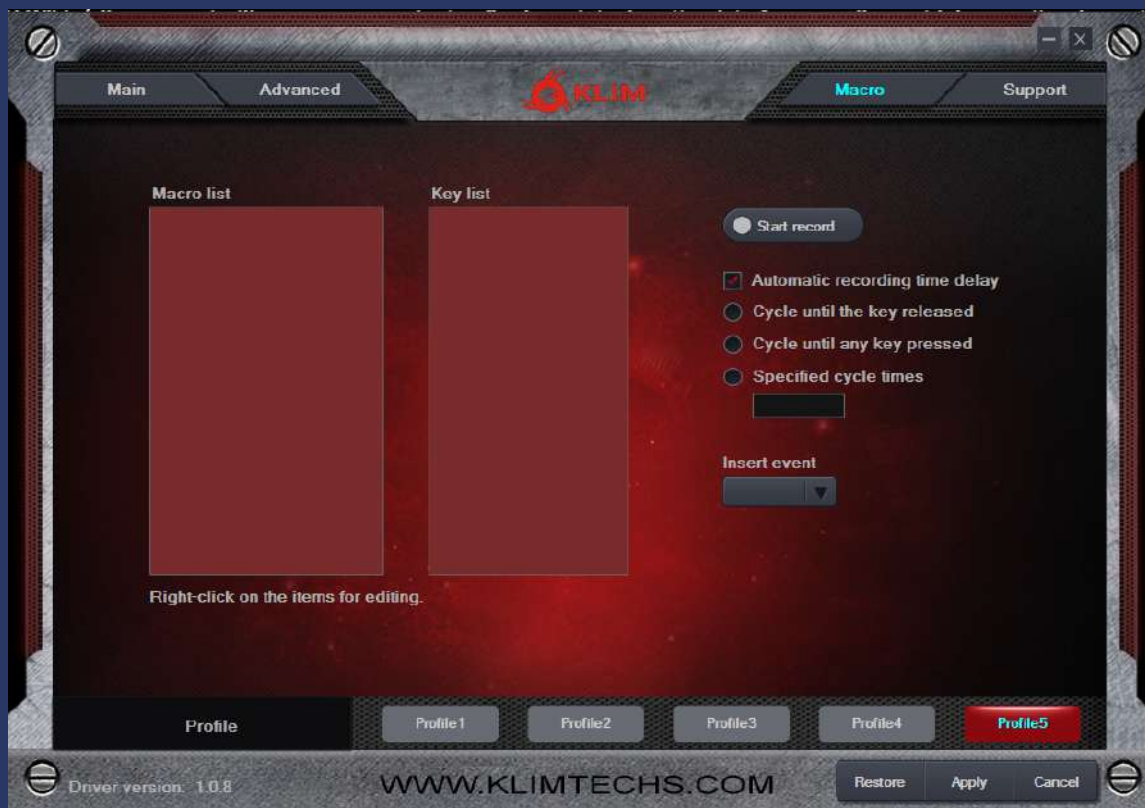
## Step 7:



1. You can choose what colour each DPI level corresponds to.
2. You can choose 4 different modes for LED, steady will display a continuous light, breathe means a slow blink and blink means a blinking light. You can then select its brightness, frequency etc...



## Step 8:



In this tab you can configure macros, these will allow you to execute a series of commands with a single button press.

We would like to thank you, in the name of the entire team here at KLIM, for having purchased the KLIM Skill and we hope it will live up to your expectations!

Don't hesitate to leave us a comment on the website you purchased it from, it really helps us tremendously!

**KLIM Team**