

cremesso

SWISS CAFE DESIGN



ENERGY
SAVE
CONCEPT



19
BAR



EASY
AVAILABLE



15 SEC
READY TO USE

uma AUTOMATIC

Coffee experience engineered in Switzerland



For your safety



- First read this entire operating manual, and keep it in a safe place for other users
- To avoid damage, only use genuine cremesso capsules with this machine
- Intended use: This appliance may only be used as described in this manual. Using it for other purposes is abusive and dangerous
- Danger of electric shock! Never immerse the machine in water or any other liquid
- Connect only to a properly grounded power point (220-240 V) protected by at least a 10 A fuse. To make sure that the machine is switched off, remove the plug from the power point
- Always pull out the power plug before:
 - relocating the machine
 - cleaning or maintenance
 - long periods of disuse
- Never clamp or run the power cable over sharp corners or edges: Danger of electric shock!
Damaged power cables may only be replaced at the customer service centre: Danger of electric shock!
- Never touch the power plug/socket/cable or the machine with damp or wet hands. Never unplug by pulling the power cable; always pull out the plug
- If you need an extension cable, make sure it is suitable for your machine (3-pole grounded, and at least 1.5 mm² conductor cross-section), and lay the cable to avoid tripping
- We recommend connecting the machine via an FI circuit breaker. Consult a specialist if in doubt
- Danger of scalding! Never move the machine during operation!
- Never operate the machine without water
- A permanent water supply connection is not allowed
- Danger of burning! Never touch very hot parts of the machine (e.g. brew unit during operation)
- Danger of scalding! Do not touch the coffee or water jets
- Danger of scalding! Never start the machine when the operating lever is open
- Danger of scalding! Do not move the operating lever when the machine is still under pressure making tea or coffee
- Do not insert fingers or hands under the operating lever: Danger of crushing!
- Do not insert fingers in the capsule holder. Danger of burning/cutting!
- The machine location must meet the following requirements:
 - Place on a dry, stable and level surface that is waterproof and heat-proof
 - At least 60 cm (2 feet) away from sink and taps
 - Only use in dry rooms

– **Do not use the machine in case of:**

- faulty operation
- damaged power cable
- after falling or other damage
- In such cases immediately have the machine checked and repaired if necessary at the customer service centre
- **Never place the machine:**
 - directly on marble surfaces, untreated or oiled woodwork (risk of non-removable coffee or descaler stains; no claims will be entertained in such cases)
 - directly beneath a power socket
 - on flammable or meltable objects or surfaces
 - on hot surfaces or nearer than 50 cm to open flames (same applies to the power cable!)
 - under any covering
 - To prevent frost damage, do not store the machine at temperatures below 5 °C (e.g. in caravans)
- Pull out the power plug and allow the machine to cool down completely before cleaning and/or maintenance
- Only use cleaning and descaling agents recommended by the manufacturer
- Descaling fluid can be a health hazard. Avoid contact with eyes, skin and other surfaces

– To prevent damage, never use replacement parts or accessories not recommended by the manufacturer

- Persons, including children, who in view of the level of their physical, sensory or mental capacities, or their lack of experience or knowledge, are not in a position to use the equipment with safety, may not use this machine without supervision or instruction by a responsible person
- Children more than 8 years old may use this appliance but only under supervision or after instruction and fully understanding the associated risks and dangers
- Children must not play with this appliance because they cannot know the dangers involved
- Keep this appliance and power cable away from children younger than 8.
- Cleaning and user maintenance must not be done by children unless they are aged 8 or more and under supervision.
- This appliance is intended for household and for similar applications such as:
 - in kitchens for use by shop, office and other employees
 - on farms
 - for hotel, motel and apartment customers
 - in boarding houses

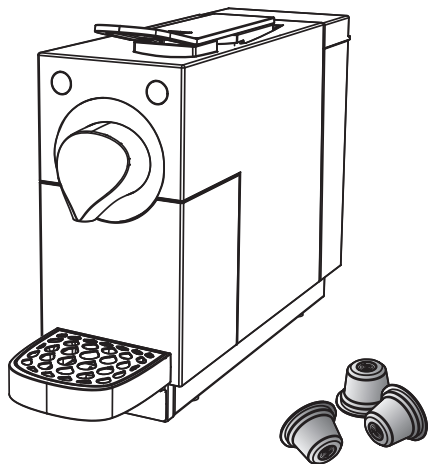
cremesso

S W I S S C A F E D E S I G N

Congratulations on choosing the **cremesso** system! It will give you the greatest pleasure – capsule by capsule. In a few seconds your **cremesso UNA** will conjure up all kinds of perfectly prepared beverages: the first-class **cremesso** coffee and tea selection meets even your most discriminating demands.

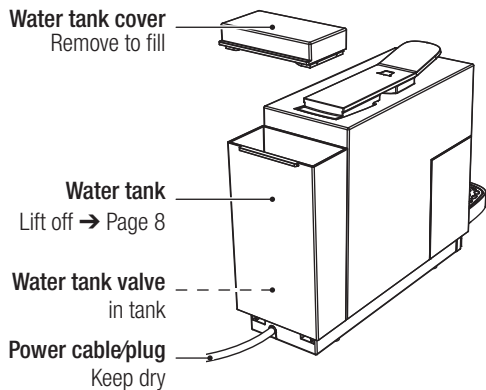
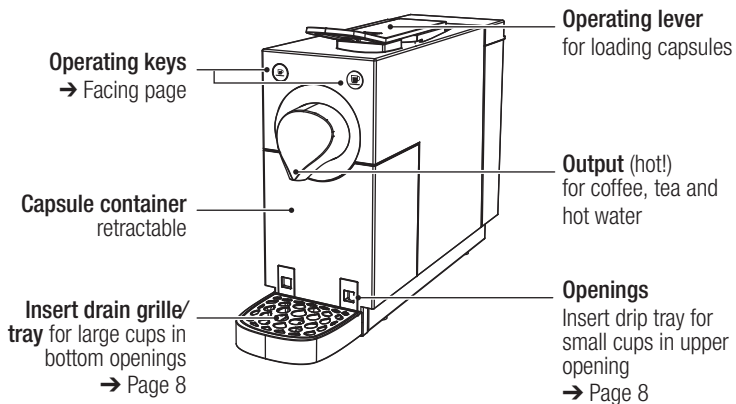
We thank you for your confidence in **cremesso**, and wish you many years of enjoyment.

At www.cremesso.com you can download this manual in PDF format and get the latest information on the **cremesso** capsule system.



Contents

– Safety notes	2
– Overview of machine parts and controls	6
– Key displays	7
– Starting up	8
– Preparation / installation / water filling / power connection / deaerating	8
– Making coffee or tea / after making coffee or tea	10
– Special functions	12
– Programming the amount of coffee	12
– Energy-saving mode	12
– Cleaning / maintenance / descaling	14
– Daily: emptying the capsule container, drip tray and water tank	14
– Rinse out and deaerating the machine and internal piping	16
– Cleaning the machine and parts	16
– At least every two months: Descaling	18
– Always steam out before storage or transport	20
– Various	22
– Troubleshooting guide	22
– Disposal / technical data	23



Key displays

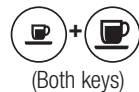
The keys light up differently according to operating mode:



- White** (slow flickering):
 - Energy-saving mode, press key → Page 12
- White** (continuous):
 - Ready or Coffee/tea output → Page 10
- White** (flashing):
 - Machine heating up → Page 10
- White** (flashing rapidly):
 - Programme the amount of coffee → Page 12

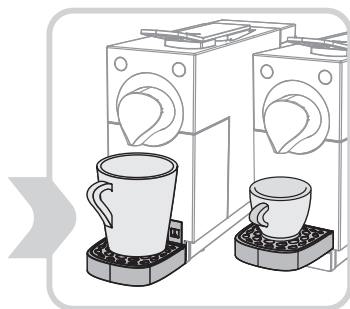


- White** (continuous):
 - Ready or Coffee/tea output → Page 10
- White** (flashing):
 - Machine heating up → Page 10
- White** (flashing rapidly):
 - Programme the amount of coffee → Page 12

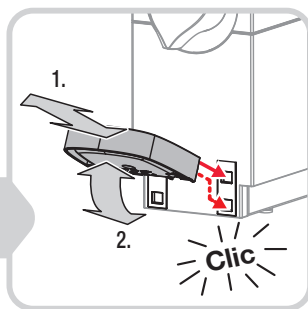


- White** (continuous):
 - Ready for coffee/tea output
- Dark:**
 - Machine switched off or power plug not inserted
→ press any key → Page 12
- White** (flashing slowly):
 - Steaming-out in progress → Page 20
- White** (flashing rapidly):
 - Electronics fault or temperature error (temperature too high or below 5 °C); pull out power plug and wait 30 minutes before replacing. If rapid flashing continues → contact service centre (30 minutes warming up time from low temperatures should be enough to restore normal operation)

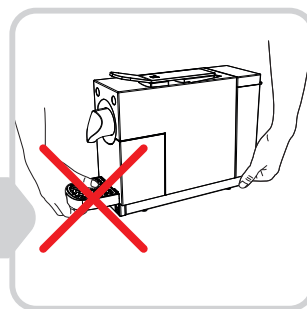
Preparation/installation/water filling/power connection/deaerating



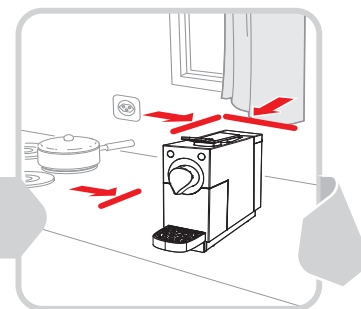
Cup size: Insert drip tray in top or bottom opening, depending on cup size:



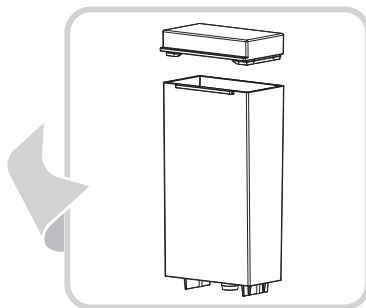
1. Insert tray obliquely into top or bottom opening, 2. Press down (clicks in place). Remove tray in opposite order



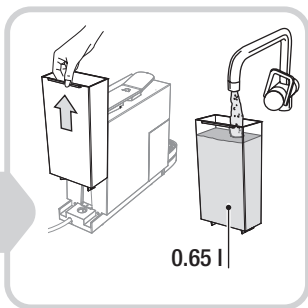
Carry/Transport: Never hold the machine on the drip tray (risk of dropping machine)!



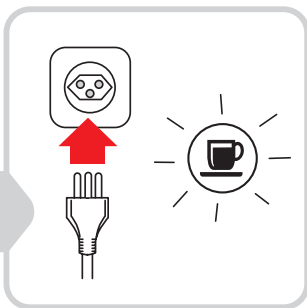
Install on a dry, stable, waterproof and heatproof surface. Not directly on marble or wood (risk of coffee or descaler stains)




Clean the water tank with luke-warm water and household detergent, rinse and allow to dry thoroughly







Fill tank with cold water (max. 0.65 litres). Change water daily

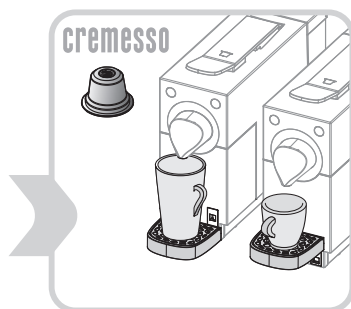


Insert power plug in an earthed socket. The right-hand **key**  flickers slowly to indicate energy-saving mode → page 12



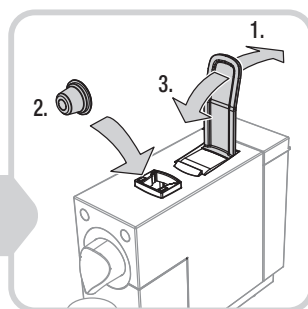
Deaerate and rinse the internal piping: Do not load a capsule. Place a cup under the output and **press key**  **or** . Afterwards empty the cup and press again key  **or** 

Your first coffee or tea!

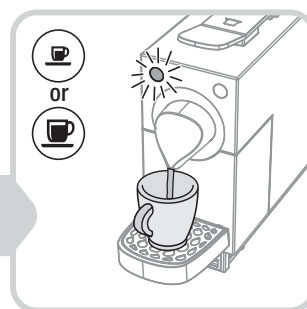


Use one **cremesso** capsule for each cup. No other types of capsule can be used. After long pauses, deaerate the piping → page 16.

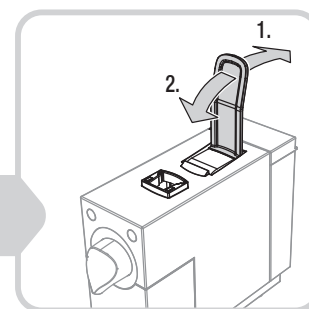
Cup: place a cup under the output. Insert drip tray into top or bottom opening → S. 8



Load capsule: 1. Push the operating lever right back. 2. Drop the capsule straight into the opening. 3. Pull the operating lever right forward to pierce the capsule



Coffee/tea output: Choose the key for small ☺ or big cup ☹ (key flashes). Output stops automatically (or press the key again to stop earlier)



Eject the capsule: 1. Push operating lever right back (the used capsule drops into the capsule container). 2. Pull operating lever right forward



Good to know

The output key first flashes white to indicate heating up. Output starts when it stays white. You can adjust the output quantity to your preferences (→ page 12 «Programming the coffee quantity»).

Tip: Use thick preheated cups for ristretto and espresso to keep your coffee warm. **Preheat the cup:** Press espresso ☹ (without capsule) and fill the cup with water.

Deaerate the piping: After long pauses (e.g. vacations) they contain air (→ page 16 «Rinse and deaerate machine/piping»).

Before changing between coffee and tea: Press key ☺ or ☹ without a capsule to rinse the piping (→ page 16 «Rinse and deaerate machine/piping»).

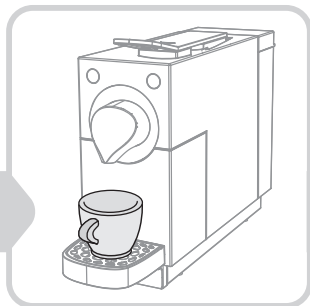
Capsule: The capsule may stick in the opening if it has been there a long time. If so, open and close the operating lever. If the capsule is still blocked, push down lightly with a finger (caution: hot sharp opening point inside!).

After opening the **operating lever**, water may drain into the tank. This is normal and not a fault.

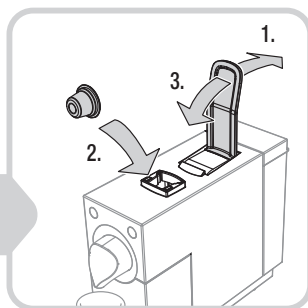
Note:

- Beware of scalding by hot coffee or tea
- The operating lever must be closed for coffee/tea output

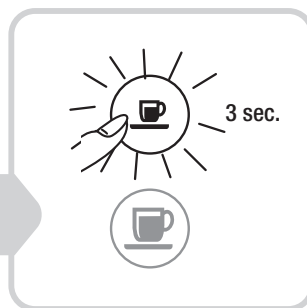
Programming the coffee quantity



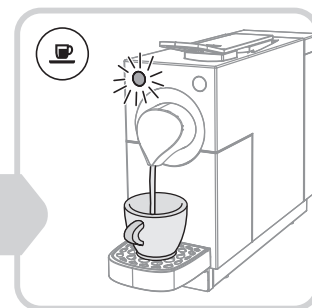
Programming: Place a cup under the output



Load capsule: 1. Push the operating lever right back. 2. Drop capsule straight into the opening. 3. Pull operating lever right forward

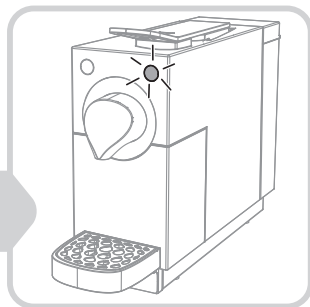


Hold down the key to be programmed, e.g. ☉ (min. 3 seconds) until it starts flashing rapidly. It then flickers slowly (= heating up)

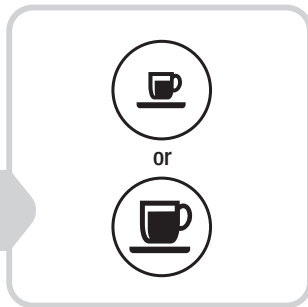


Coffee output starts. When your cup is full enough **press the key again** – output stops and both keys light up again

Energy-saving mode



Energy-saving mode activated: key ☉ flickers slowly



Stop energy-saving mode: press one of the keys (keys ☉ and ☉ flash white)



Good to know

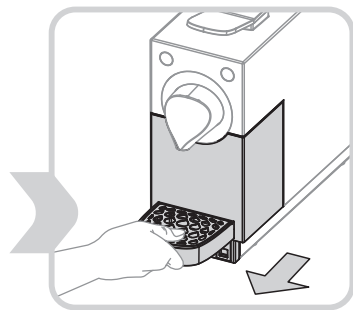
Output quantity on first startup (= works setting):

- ☉ Espresso 50 ml (= «small» cup)
- ☉ Lungotea 110 ml (= «large» cup)

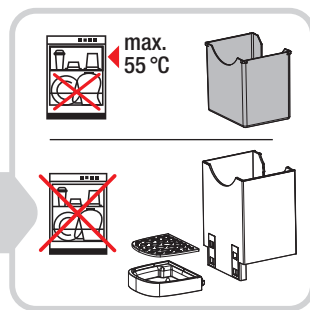
Energy-saving mode is automatically activated if no key is pressed for 60 seconds (key ☉ slowly flickers light/dark).

Switching off: after another 5 minutes the machine shuts off automatically (key ☉ extinguishes). The machine can be immediately switched off manually by pressing keys ☉ and ☉ simultaneously for 3 seconds. To shut it off permanently (e.g. during vacations), pull out the power plug.

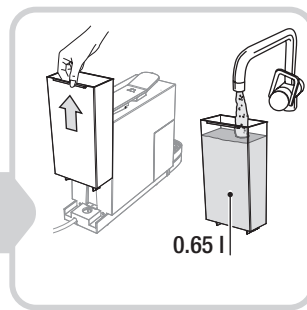
Daily: Empty the capsule container, drip tray and water tank



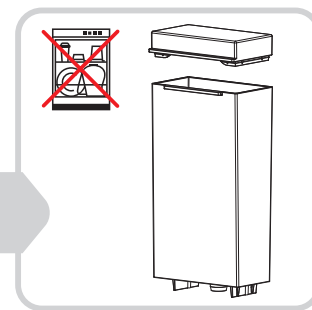
Hold the **drip tray** firmly and pull it forward



Remove the **capsule container**, **drip grille** and **drip tray**.
After cleaning reassemble in the opposite order



Daily: empty the water tank and fill with cold water (max. 0.65 litres)



Clean the water tank and lid with luke-warm water and household detergent.
Never clean in the dishwasher!



Good to know

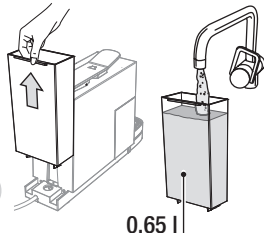
Hygiene: Empty the water tank daily. Empty the used capsule container, drainage tank and drip tray after about 10 beverages or at least once daily to prevent overflow.

Important: Never clean in the dishwasher (except the used capsule container)

Rinse and deaerate the machine and piping




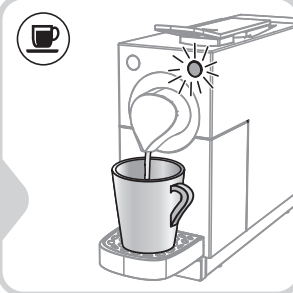
Before first startup or after long pauses (e.g. vacations), flush and vent the machine




Fill water tank with cold water (max. 0.65 l)



Place a cup under the output. Do not insert a capsule. If key  flickers slowly, press any key

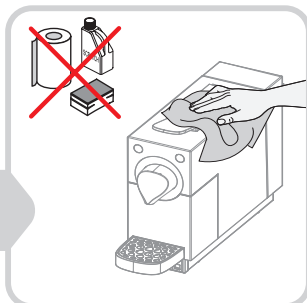


Press key  to start rinsing/ deaerating. When the pump stops after a few seconds, rinsing/deaerating is finished

Cleaning the machine and parts



Always pull out the power plug first. Never immerse the machine or wash under running water



Clean the machine and output with a damp cloth. **Never rub dry or use abrasive detergents**



Good to know

Always keep the power cable and plug dry.

At least every 2 months: descale

⚠ Important!

Regular descaling (at least every two months) means better coffee and makes your appliance last longer.

Scaling is not covered by the guarantee.

Use special descaler (never use vinegar) following the mixing instructions on the label.

Remove all capsules from the machine before descaling.

Descaling takes about **30 minutes**.

Before making another drink after descaling, always **make sure the machine is flushed out with clean water**. Otherwise the water circuit still contains descaler ⚠ which is a **health hazard**.

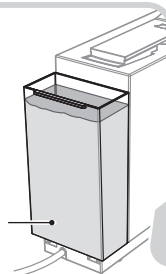


**300 cups /
1 - 2 months**

To prevent damage, **descale the machine after 300 cups of coffee / tea or 1 to 2 months**



**min.
0.65 l**



Mix special descaler with water and fill the tank (0.65 litres; mixture as shown on label). **Never use vinegar** (damages the machine)!



min. 0.65 l

Remove all capsules from the machine. Place a **large bowl** (min. 0.65 l) under the nozzle. If ☕ slowly lights up in light/dark, press key



Press ☕ until the descaler starts pouring out. **Leave the descaler** in the machine **for 3 min.** to take effect. Repeat until the tank is empty



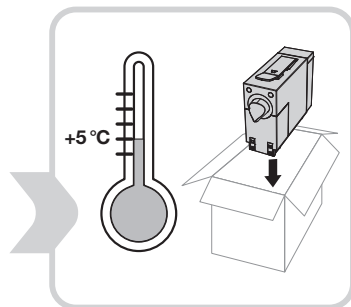
0.65 l

Tank empty: Rinse the tank well, **fill with water, and replace**. **Empty** the descaler fluid bowl and replace it under the outlet. Repeat pressing the ☕-key until the tank is empty.



Fill the tank and press ☕. Pour **1 coffee without capsule**. **The machine is now ready for use**

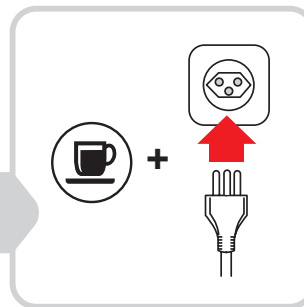
Always steam out prior to storage or transport



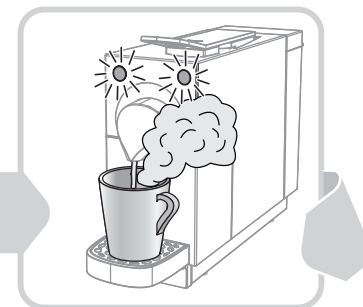
To avoid damage during storage or transport, first steam out the machine (to remove all water). This is essential at temperatures below 5 °C



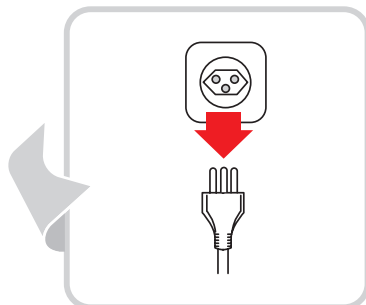
Pull out the power plug. Empty the water tank and replace it. Place a cup under the outlet



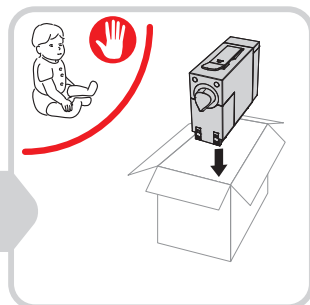
Hold down the Lungo/Tea key and insert the power plug. Steaming out starts, and you can release the key



Beware of hot steam: danger of scalding! After a few seconds you will hear the pump. As soon as it stops, the key lights go out and decalcification is finished



Pull out the power plug. Store the machine in a dry, dust-free place, out of reach of children



Tip: Use the original packaging



Good to know

Always be sure to steam out the machine before long periods of disuse or storage/transport temperatures below 5 °C.

This removes all water from the system to prevent frost damage.

Flush out the machine and piping before using again (→ page 16).

At temperatures below 5 °C the machine cannot be started; keys and flash rapidly.

Troubleshooting guide



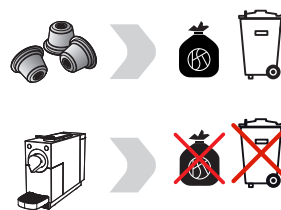
Repairs to your machine may only be carried out at the Service centre. Unprofessional repairs and use of non-original replacement parts can be dangerous for the user. In case of unprofessional repairs, no liability will be accepted for resultant damage and the guarantee is invalidated.

If this troubleshooting guide does not help you solve your problem, please contact your local sales point.

Important: pull out the power plug immediately in case of faults, defects or possible damage to the machine after a fall.

Faulty coffee output	
No coffee/tea output, or insufficient output	<ul style="list-style-type: none"> – Fill water tank and insert fully – Defective capsule → insert a new one – Close the operating lever as far as it will go – Descale the machine → page 18 – Pump defective → contact service centre
Pump sounds very loud	– Water tank empty → fill and/or insert fully
Water drips continuously from the outlet	– Descale the machine → page 18
Occasional drips from the outlet	– Eject used capsule
Coffee/tea tastes sour	<ul style="list-style-type: none"> – Inadequate flushing after descaling – Coffee “good until” date expired → use a new capsule
Cup filling not as programmed	<ul style="list-style-type: none"> – Water tank empty → fill and/or insert fully – Programming has changed → re-programme → page 12 – Descale the machine → page 18
No water sucked in after tank was empty	<ul style="list-style-type: none"> – Used capsule in machine → Eject → Flush out piping → page 16 – Try again without capsule after 30 minutes. Descale machine if water is sucked in – After 30 minutes try again without a capsule. If still no water sucked in → contact service centre
Both keys flash rapidly	– Electronics or temperature error → page 21

Disposal



- Dispose of used cremesso coffee and tea capsules according to the regulations in your country
- Worn-out machines should be returned to your dealer for professional disposal free of charge
- Machines with dangerous defects must be disposed of immediately to make sure that they can no longer be used
- For environment protection reasons, never dispose of old or defective machines with household garbage

Technical data Type DC 264

- | | | |
|-----------------------|---|--|
| – Rated voltage | 220-240 V / 50 Hz
(Israel: 230 V / 50 Hz,
Korea: 220 V / 60 Hz) | – Weight (without water) approx. 3.25 kg |
| – Rated power | 1455 Watt
(Korea 1310 W) | – Water tank capacity max. 0.65 litres |
| – Energy-saving mode | 0.3 W | – Radio interference suppression according to EU standards |
| – Dimensions (WxHxD): | ca. 106 x 255 x 371 mm | – Compliance CE, GS, RoHS, WEEE
(Korea also KC;
Russia also EAC) |

In the interest of technical progress, design and/or execution changes to this appliance are reserved.

cremesso

SWISS CAFE DESIGN

www.cremesso.com

V5 23/13