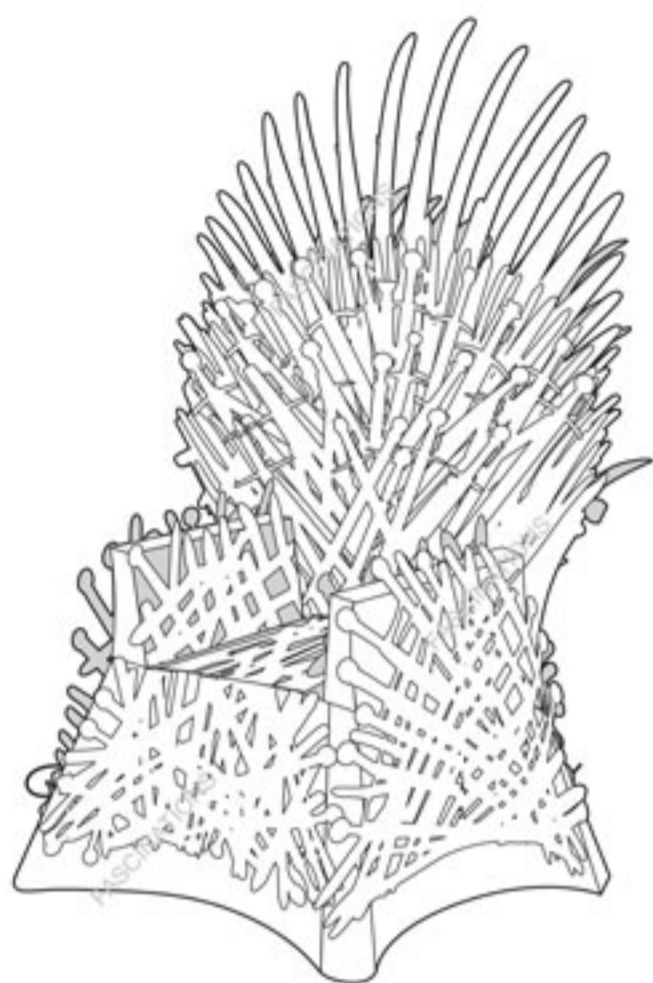




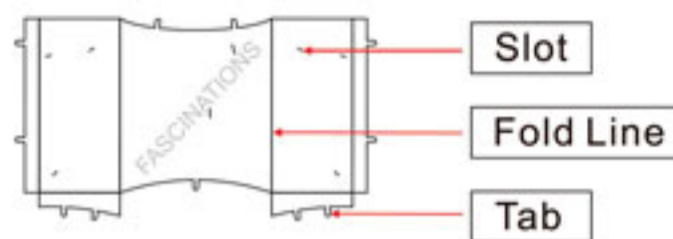
It is highly recommended that you visit [www.metalearth.com/360/icx122](http://www.metalearth.com/360/icx122) to see the completed model before assembling your own

ICX122



IRON THRONE

### TO CREATE THE BEST CONNECTIONS



**Legends:**

- Engraved side
- Non-engraved side
- Attention point
- Insert tab and bend 90 degrees
- Insert tab and twist 90 degrees

**Assembly tip:**

If needed, slightly twist tabs to hold parts together then untwist and bend them down for a nice finish

**Recommended tools:**

-Wire cutters: helpful for taking parts from the metal sheets.

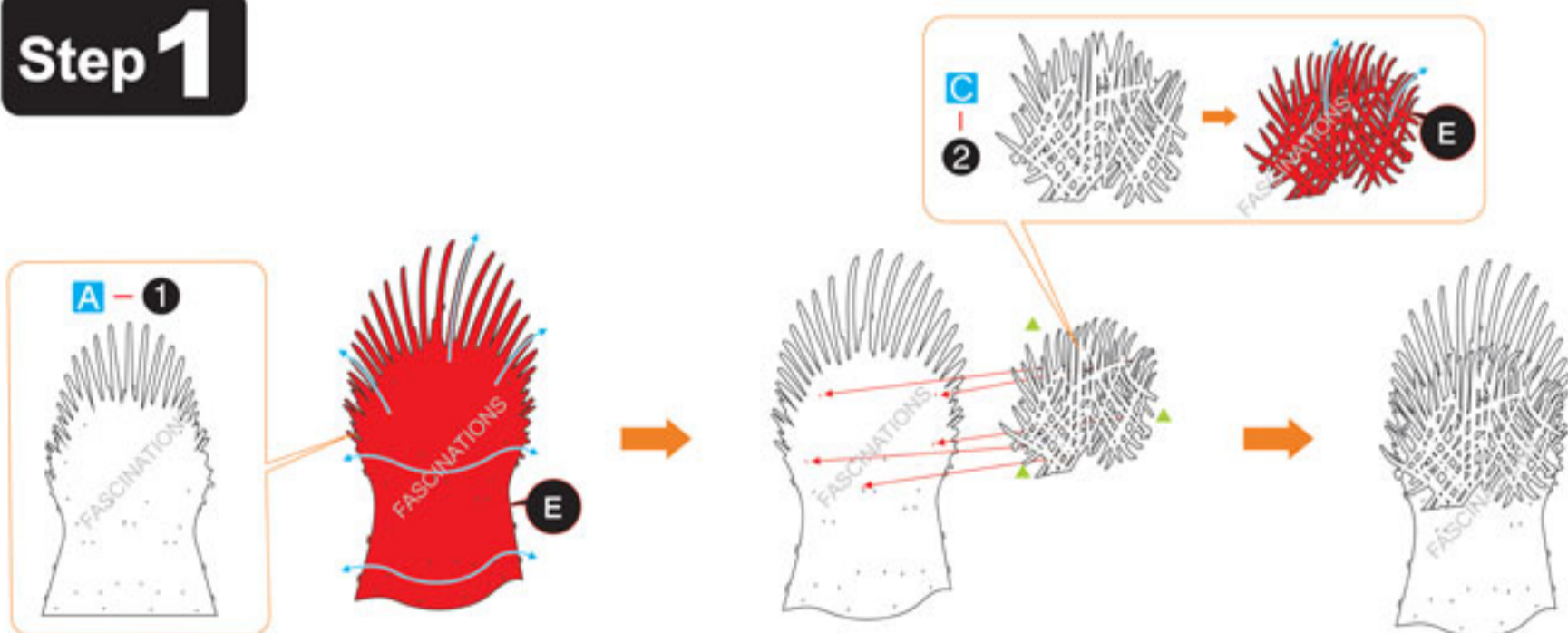


-Tweezers or needle nose pliers: helpful for folding parts, bending and twisting tabs.

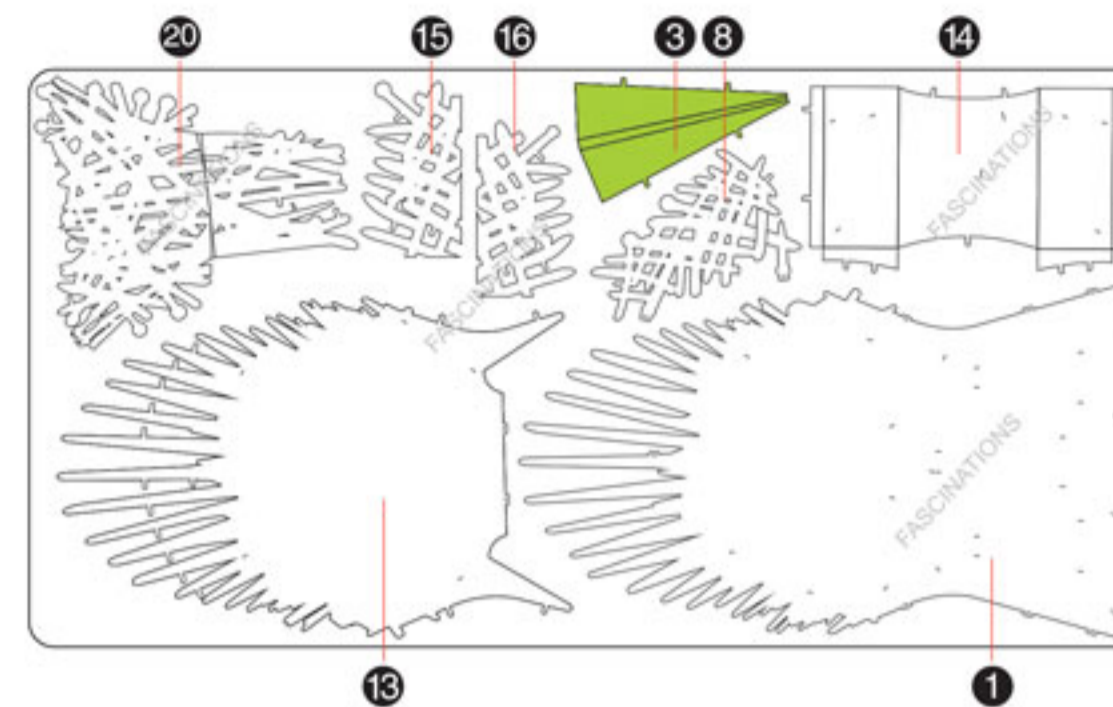


### ASSEMBLY STEPS

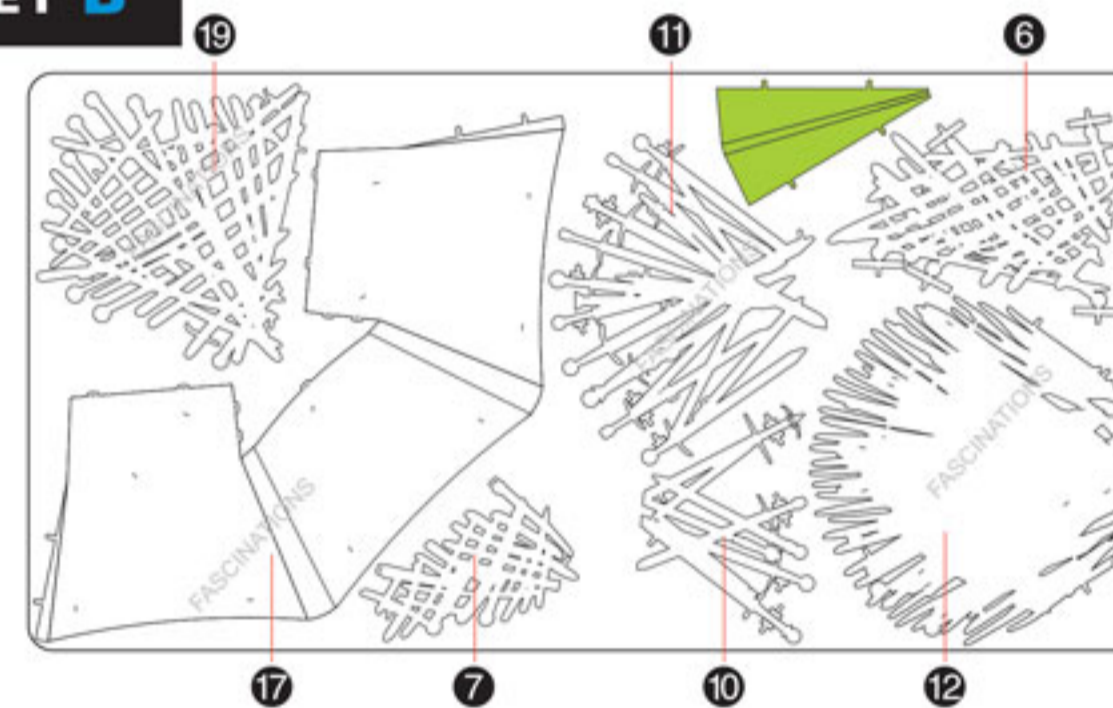
#### Step 1



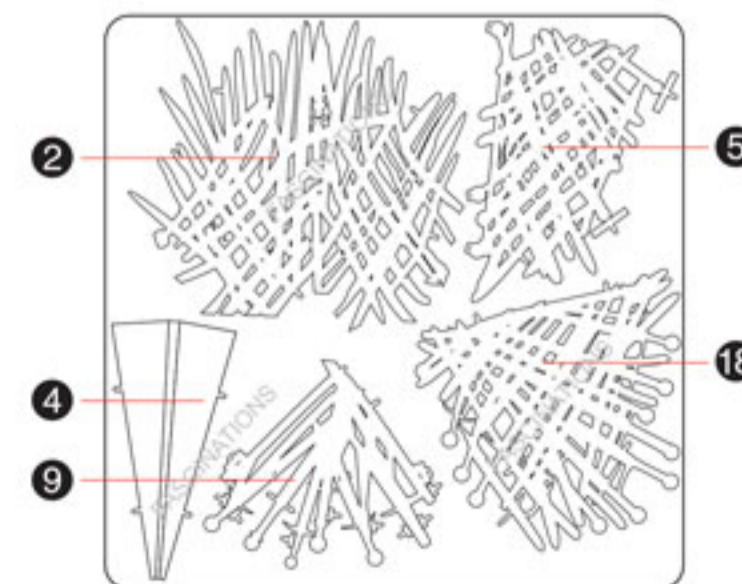
### METAL SHEET A



### METAL SHEET B



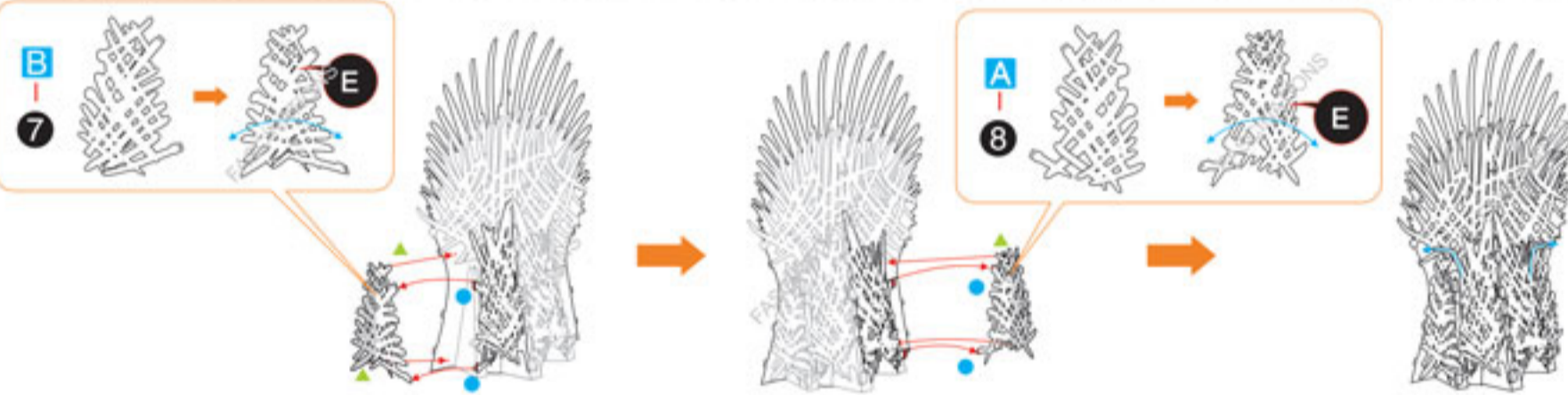
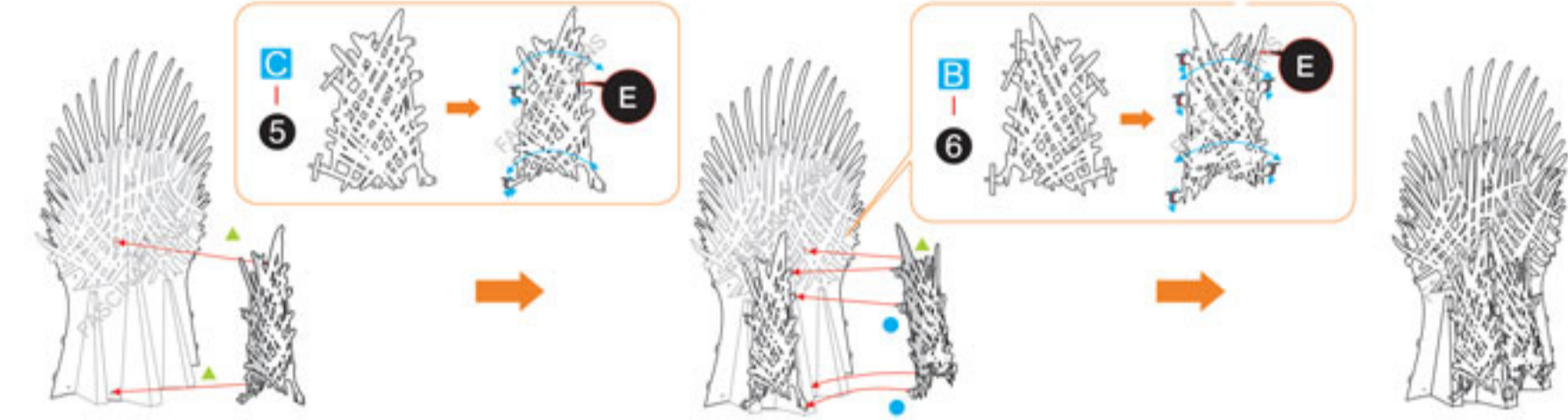
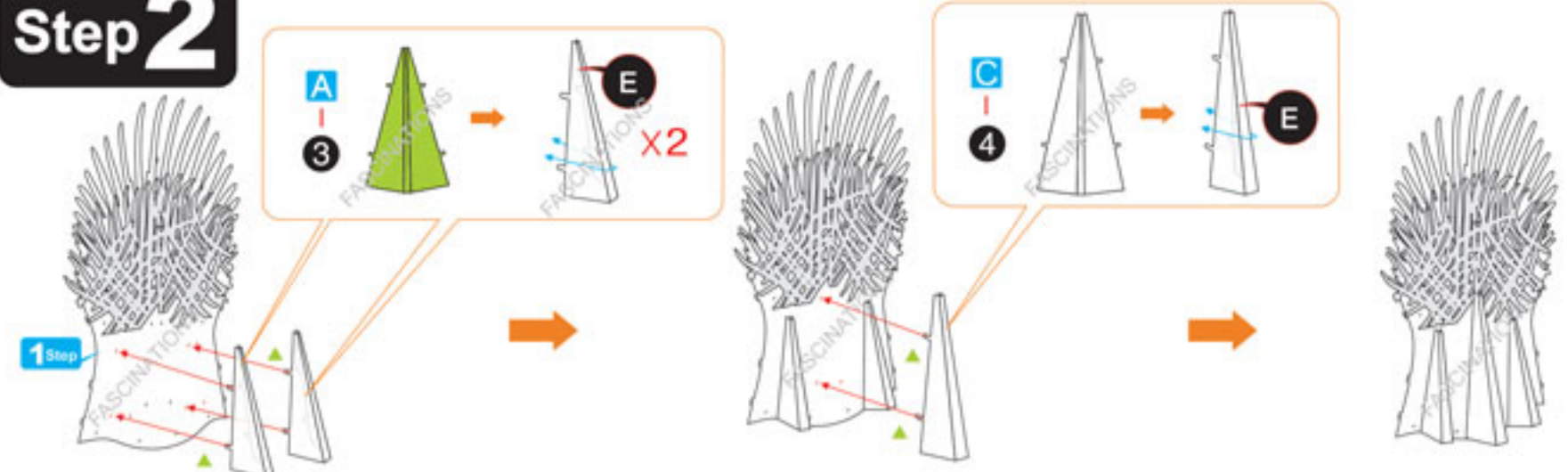
### METAL SHEET C



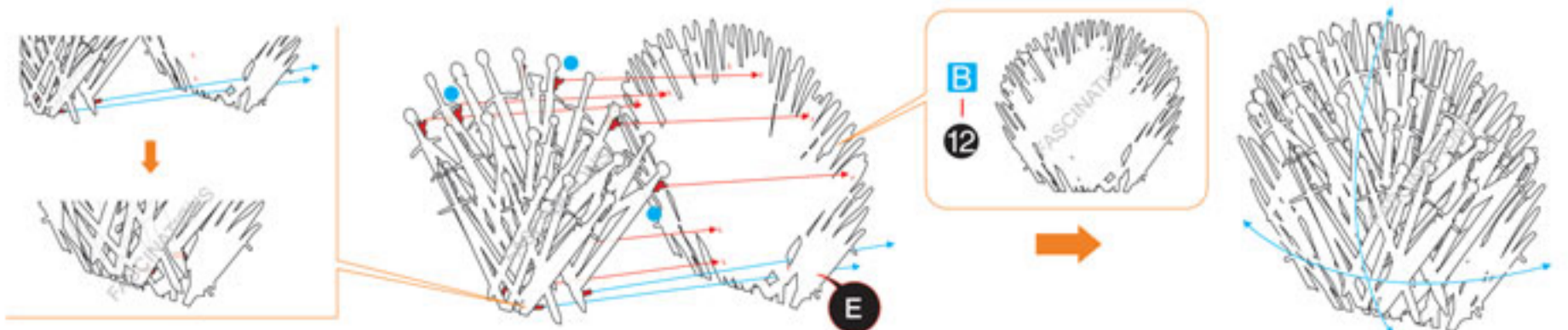
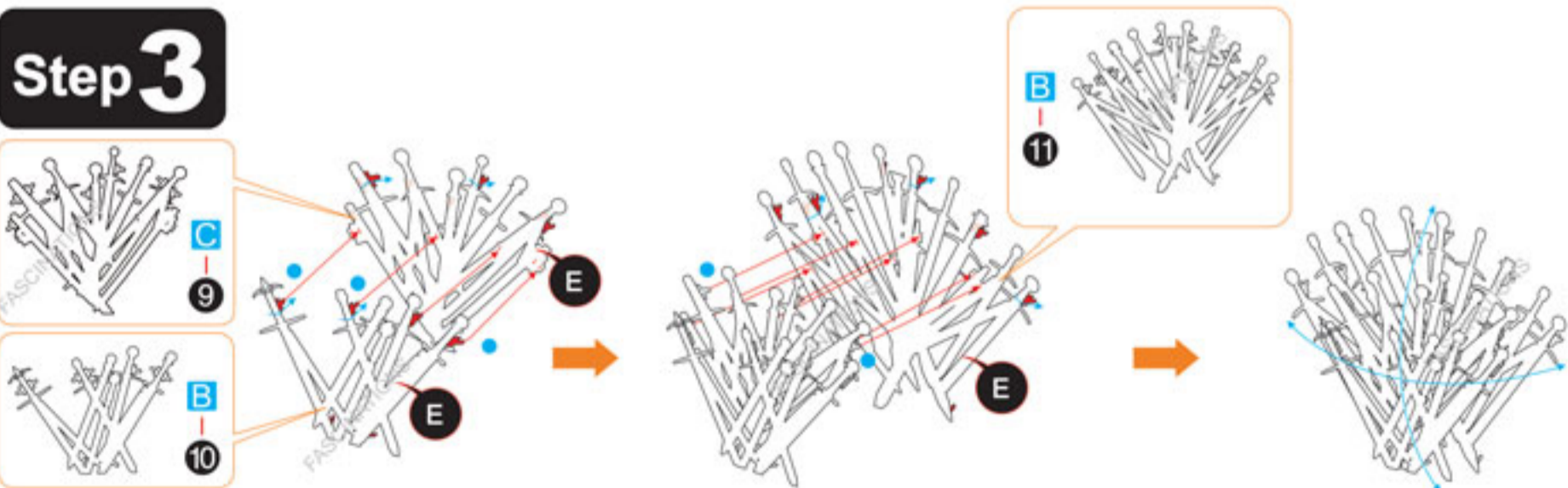
In order to avoid possible injury from sharp edges, please carefully discard the metal sheets after parts have been removed.



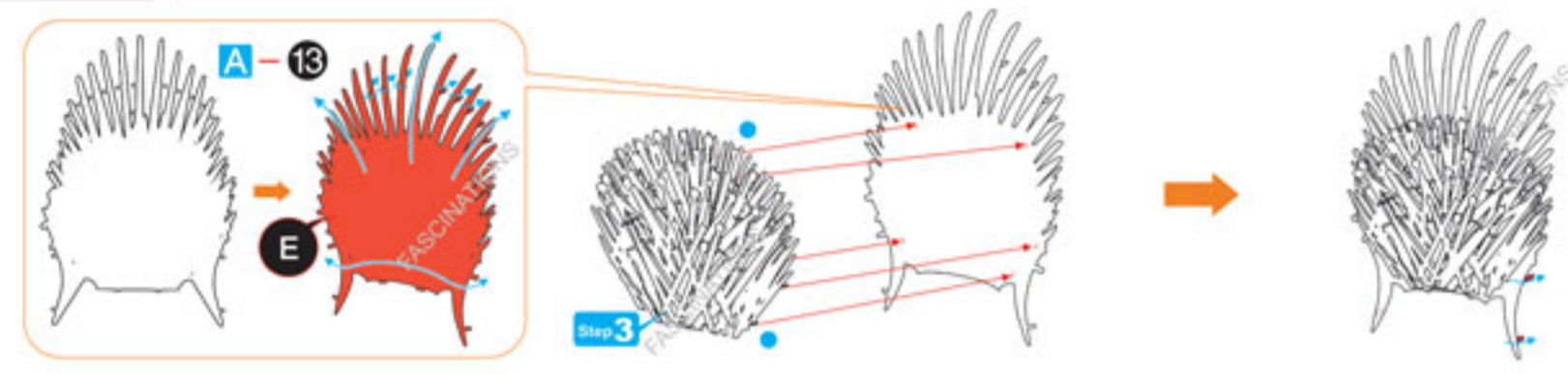
### Step 2



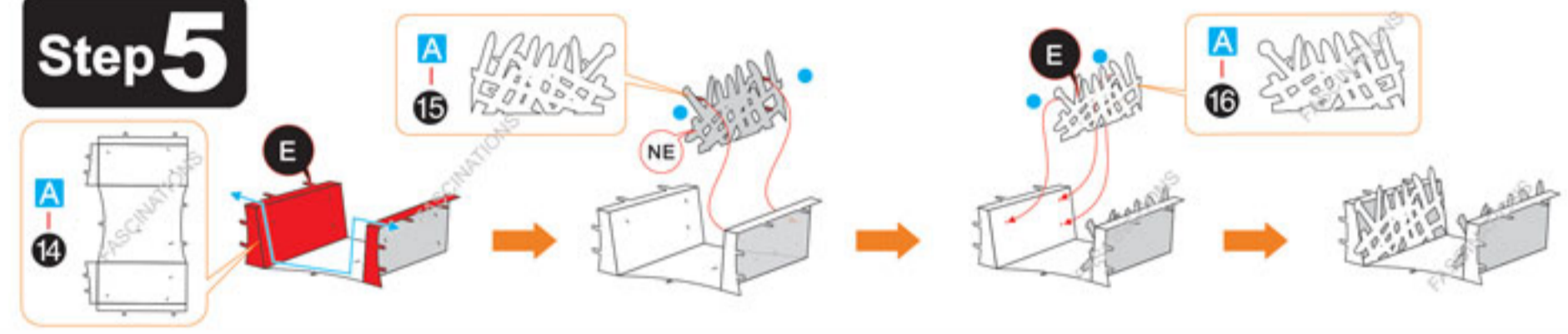
### Step 3



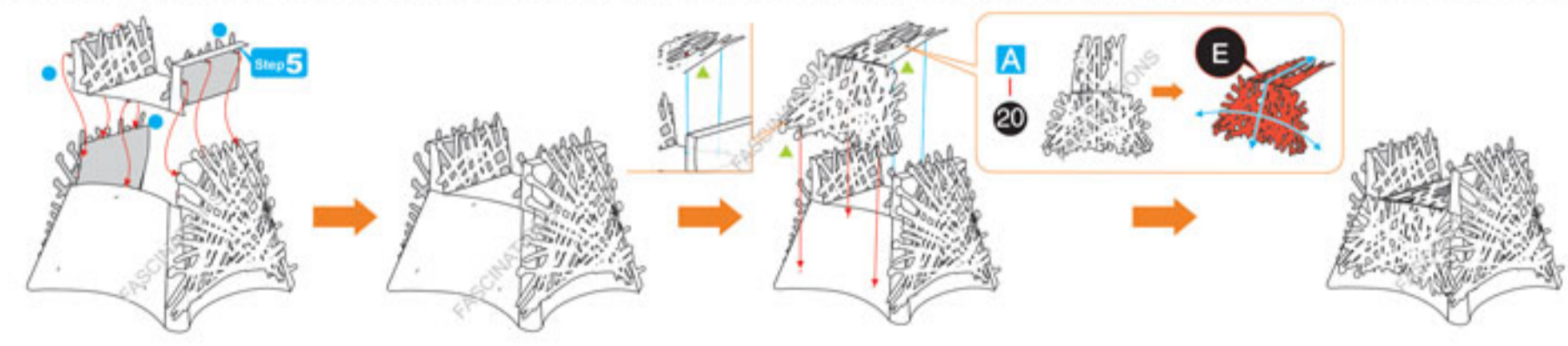
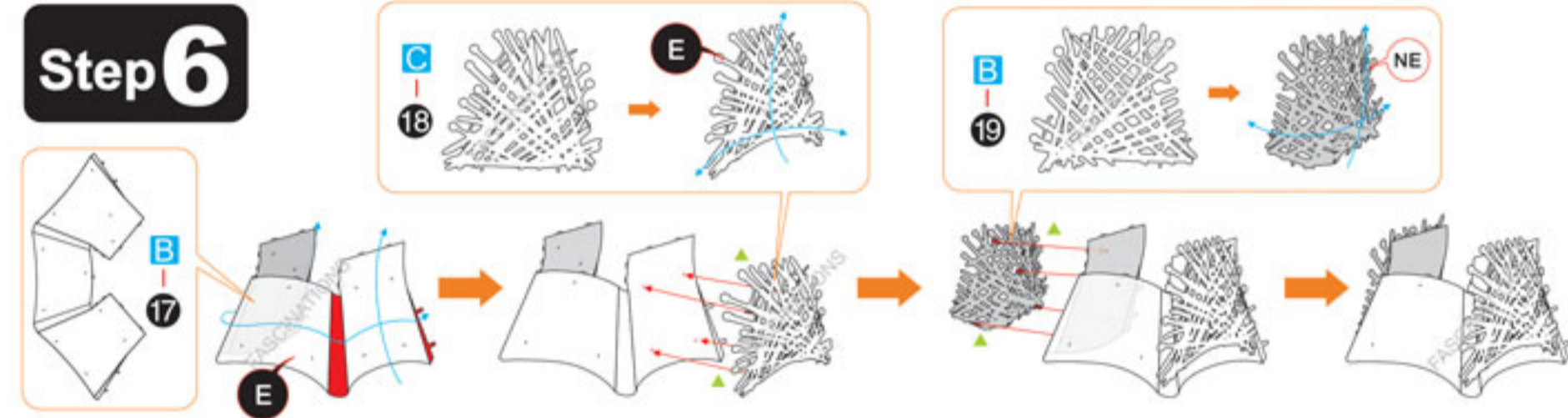
### Step 4



### Step 5



### Step 6



### Step 7

